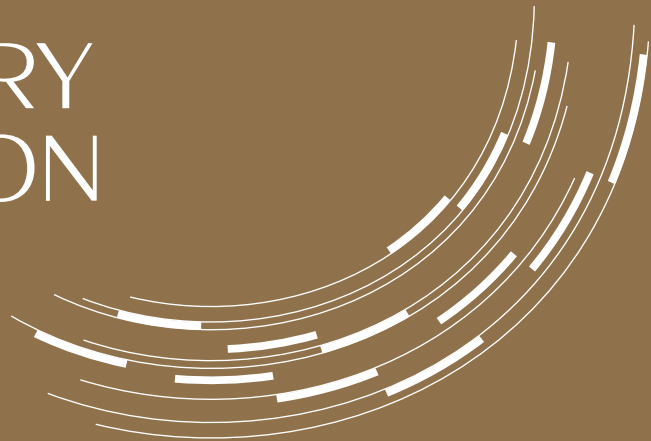


PKF—PRAGUE
PHILHARMONIA
30TH ANNIVERSARY
CONCERT SEASON
2023•2024

pkf  prague philharmonia







KATEŘINA KALISTOVÁ
DIRECTOR
PKF—PRAGUE PHILHARMONIA

A handwritten signature in white ink on a brown background, reading "Kalistová".

Dear Music Lovers and Supporters
of the PKF—Prague Philharmonia,

Our orchestra is now entering its 30th season in full glory and freshness. It deserves a cake with 30 candles, a toast and of course congratulations. I will start with the congratulations:

Dear PKF, 30 is the best age not only for people but also for musical ensembles. Over the years, you have won the admiration and respect not only of your audience at home, but also as a proud ambassador of Czech culture abroad. You have successfully passed through the happy years and the years of hardship. In the most difficult times of lockdown during the coronavirus pandemic affecting both the economy and society, you were saved by the enthusiasm and selfless dedication of your members, and above all by the overwhelming solidarity of your loyal listeners, subscribers and generous patrons. That is why you are now celebrating not alone, but together with all of us who come to play with you or listen to you.

A proper celebration includes music, and I know that you have prepared a large portion of music for your anniversary season. Lovers of Classicism, Romanticism, and 20th-century Modernism, as well as contemporary music, will be in for a treat. Thank you also for not forgetting to take care of our child audiences.

I would like to wish you many more years of success, inspiration, joy and, above all, positive energy, which you give to your audience and which your audience gives back to you. I sincerely thank all those who have made this happen — namely the members of the orchestra, the Chief Conductor and the supporting staff. And also our loyal donors and supporters. And most of all, the music lovers who attend our concerts and the listeners of our recordings.

To all of you I now raise my glass and applaud.



EMMANUEL VILLAUME
MUSIC DIRECTOR & CHIEF CONDUCTOR
PKF—PRAGUE PHILHARMONIA

Smetana was born in 1824, Dvořák died in 1904. Once a decade, these years ending in a '4' are an opportunity to celebrate the vast richness of Czech music. Our 2023/2024 Subscription Series A centers on music by Dvořák, with two main focuses. The first is on such well-known works as his *Symphony No. 8*, which we recently recorded; the *Violin Concerto*, with star violinist Midori; the *Cello Concerto*, with Jan Vogler; and the violin *Romance*, with the celebrated Anne Akiko-Meyers. The second is on lesser-known works including the energetic *Symphony No. 4*, whose 1874 Prague premiere was conducted by none other than Smetana.

Forbears of these two masters within the Czech tradition include VÁCLAV PICHL and VÁCLAV J. VEIT, whose *Symphony in B flat and Overture*, Op. 17 (respectively) I will conduct, as well as JAN V. H. VOŘÍŠEK, whose *Symphony in D* will be directed by Christoph Mathias-Mueller. But Smetana and Dvořák were also trailblazers for later Czech composers, such as JANÁČEK, whose string *Suite* will be conducted by Oscar Jockel, as well as SUK (*Scherzo fantastique*), MARTINŮ (*Overture for Orchestra*), VÍTEZSLAVA KAPRÁLOVÁ (*Suita Rustica*) and IŠA KREJČÍ (*Little Suite* for strings), all of which I introduce during the season.

To understand Czech music history, one must consider the country's geographical position and mutual influences. Vienna, city of Mozart and Beethoven, has of course played an essential role; but so has the USA, most famously in the case of Dvořák. I will be conducting his "*American*" *Suite in A major*, which is brilliantly injected with folk and traditional music of both continents. America became second homeland also to Martinů, as did France: it was in fact in Paris that Martinů mentored Vítězslava Kaprálová.

Beyond the aforementioned soloists, we also welcome such internationally recognized artists as violinist Vadim Gluzman as well as exciting new names, such as trumpeter Lucienne Renaudin Vary and saxophonist Valentine Michaud. We will also enjoy solo appearances by our own, PKF musicians in Mozart's *Sinfonia Concertante*.

This will be my ninth season as the Prague Philharmonia's Chief Conductor. I cherish every moment with these musicians, and our energy and passion for music have only grown deeper. This is particularly intense and meaningful when we perform Czech music in this beloved city and with all of you. Thank you from the bottom of my heart for being with us.



ROBERT SCHÖNFELD
FOUNDER
OF THE PKF—PRAGUE PHILHARMONIA,
CHAIRMAN OF THE BOARD OF
DIRECTORS
OF THE RSBC INVESTMENT GROUP

The 30th anniversary of our orchestra, which we will mark in 2024, is not only an occasion for celebration, but also for reflection and informal stock-taking.

I have the privilege of being among those who were able to observe at close quarters the founding of the orchestra 30 years ago by the world-famous conductor Jiří Bělohlávek. As a violin student, I participated in the orchestra's first steps, experiencing its initial successes and the recognition it gradually gained. I am proud of the high level to which the orchestra has developed over the course of time. The PKF—Prague Philharmonia has become an important point on the map of the music world, from which the good reputation of the Czech Republic abroad is spread.

Long centuries of fruitful coexistence of art and finance prove that these worlds cultivate each other and that partnership helps them both to develop successfully. Our orchestra could not do without the generous help of patrons, especially in times that are not favorable for live performances. On the other hand, music rewards its supporters by giving them inspiration, sophistication and social prestige.

I am very happy that the PKF—Prague Philharmonia's time-tested partnership with the RSBC investment group continues in this anniversary season. I firmly believe in generous and long-term support from the orchestra's patrons, as well as concert-goers and music listeners.

I wish you all a lot of harmony, joy from life and pure happiness.



MARTIN KLIMPL
CHAIRMAN
OF THE BOARD OF DIRECTORS
PKF—PRAGUE PHILHARMONIA

Dear Ladies and Gentlemen,
Dear Friends of the PKF—Prague Philharmonia,

Every year it is my pleasure to address you on behalf of the PKF—Prague Philharmonia's Board of Directors on the occasion of the opening of the new concert season. This year's season is an exceptional one. It is a jubilee season, the 30th season in a row. In the 30 years of its activity, the PKF—Prague Philharmonia has earned the recognition of Czech and international audiences and has repeatedly defended its place among the world's leading classical music performers. Just like in human life, such a significant anniversary deserves to look back into the past and make a wish for the future.

In addition to the members of the orchestra, it is therefore necessary to thank all those who have stood by our orchestra and helped it from its birth to this day. We cannot fail to mention its founder, Maestro Jiří Bělohlávek, other Chief Conductors, as well as all its CEOs, members of its Board of Directors and Supervisory Board, staff and volunteers, supporters and patrons.

From the bottom of my heart, I wish the orchestra many more artistic successes at home and on prominent international stages, and much strength and enthusiasm to continue to give their loyal audiences a lot of unique musical pleasure.

The real celebration, however, will be the concerts of the 30th concert season, where we will come together. I know we have a lot to look forward to. I wish you a wonderful musical experience!



MARTIN BAXA
MINISTER OF CULTURE

Martin Baxa

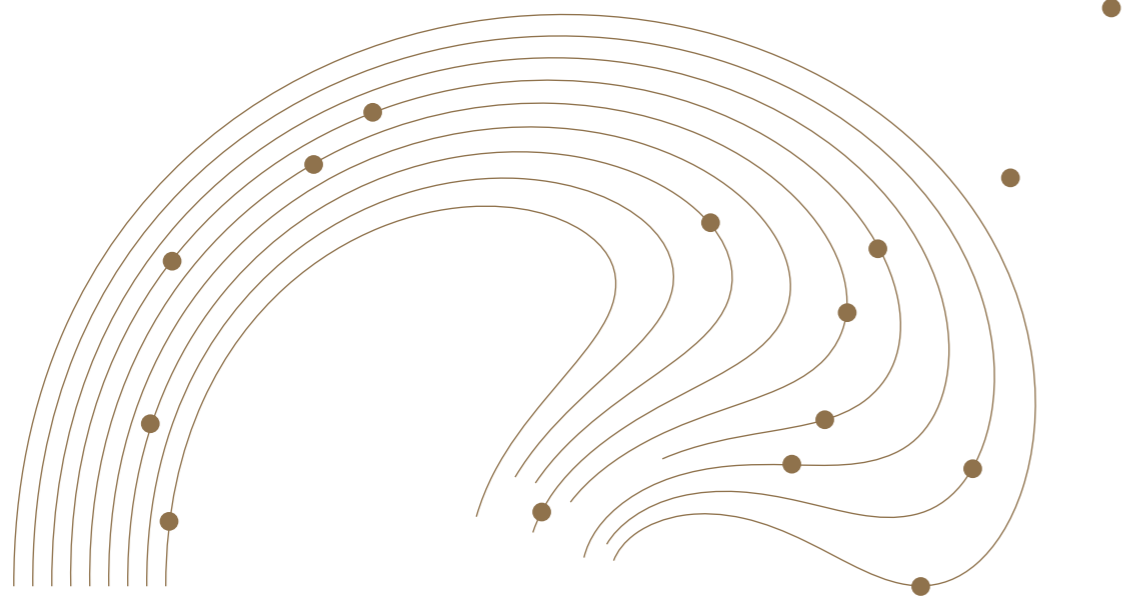
Dear Supporters of the PKF — Prague Philharmonia,

The orchestra enters its 30th season enjoying great renown for its regular international tours, collaboration with major record labels, well-known instrumentalists, singers and conductors. Listeners and the professional public appreciate its unique sound and repertoire, giving delight especially to admirers of Viennese Classicism and its top representatives (Haydn, Mozart and Beethoven) and their contemporaries, i.e., the very staple of the orchestra's repertoire. However, the ensemble's programmatic scope is much broader. The PKF — Prague Philharmonia also plays Romantic music and boldly ventures into the waters of contemporary music with a large number of commissioned works. The orchestra also takes great care of its child audiences, because through the attention paid to children the orchestra will in the future gain a loyal adult audience.

The orchestra has always been led by great musical figures. After the founder Jiří Bělohlávek, Kaspar Zehnder and Jakub Hrůša, the baton was taken up by Emmanuel Villaume, who together with the PKF — Prague Philharmonia has responded with flexibility and fearlessness to new challenges in terms of the artistic program and genres.

The orchestra is systematically dedicated not only to working with children, but also to nurturing talented young people. The PKF — Prague Philharmonia participates in the Talent of Prague 5 competition and works in partnership with the International School of Music and Fine Arts in Prague, whose educational projects involve students from more than 20 countries.

The PKF — Prague Philharmonia enters its 30th season with a unique sound, a varied repertoire and a lot of energy. And we are looking forward to seeing this impressive cocktail of the best prerequisites gradually begin to transform into a series of emotionally rich and unforgettable musical experiences of the upcoming jubilee season.



PKF — PRAGUE PHILHARMONIA

Jiří Bělohlávek (1946 — 2017)
Honorary Founder of the PKF — Prague Philharmonia



In 1994, the world-famous conductor Jiří Bělohlávek together with a group of talented young musicians founded the Prague Chamber Philharmonic Orchestra, which has been active to this day; since its 20th season under the name PKF — Prague Philharmonia. Over the 29 years of its existence, this orchestra has gained respect throughout the music world. It is appreciated for its characteristic sound as well as for the focus of its repertoire, including, but not limited to, the music by Joseph Haydn, Wolfgang Amadeus Mozart and Ludwig van Beethoven.

Since its founding, the orchestra has been led by a number of renowned chief conductors, each of whom has contributed in their own way to the development and maturation of the PKF — Prague Philharmonia's distinctive sound. After Jiří Bělohlávek, Kaspar Zehnder took over the role of Chief Conductor in 2005, followed by Jakub Hrůša in 2008. Since the beginning of the 2015/2016 season, the orchestra has been led by the French conductor Emmanuel Villaume.

The PKF — Prague Philharmonia has played with a number of internationally acclaimed conductors and soloists, such as Julian Rachlin, Martha Argerich, Jefim Bronfman, András Schiff, Gil Shaham, Isabelle Faust, Emmanuel Pahud, Luciano Pavarotti, Diana Damrau, Anna Netrebko, Plácido Domingo, Gautier Capuçon, Maxim Vengerov, Mischa Maisky, Juan Diego Flórez, Jonas Kaufmann and many others.

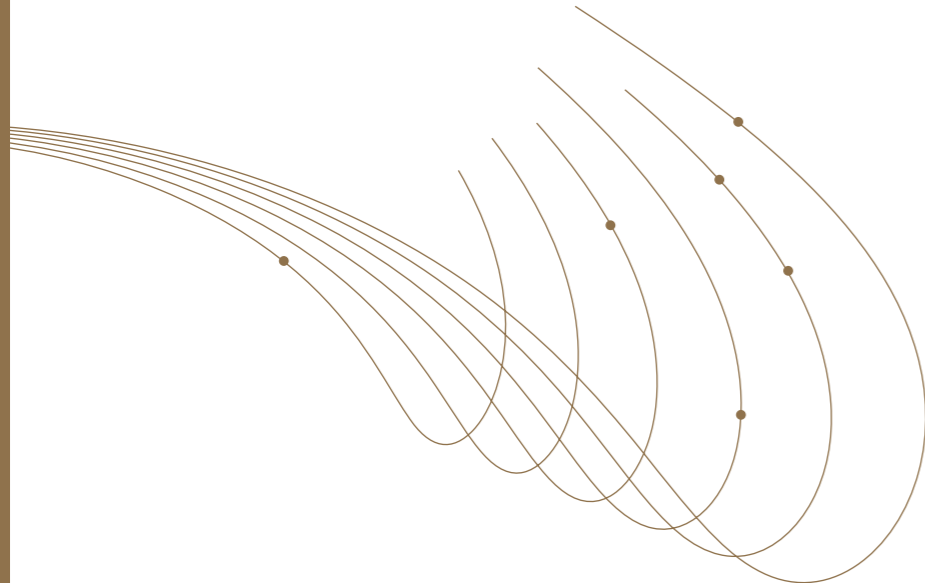
The orchestra is regularly invited to international music festivals (BBC Proms, Dresdner Musikfestspiele, MITO Settembre Musica, Prague Spring Festival, Festspielhaus Baden-Baden) and gives concerts at top world venues (Berliner Philharmonie, Elbphilharmonie Hamburg, Gasteig Munich, Tokyo Suntory Hall, Royal Opera House Muscat in Oman, Sheikh Jaber Al-Ahmad Cultural Centre in Kuwait, among others).

The PKF — Prague Philharmonia has recorded over 90 CDs, released by leading Czech and international music publishers (Deutsche Grammophon, Warner Classics, Sony Classical, Decca, EMI, Harmonia Mundi and Supraphon). Its recordings have garnered numerous prizes: the Gold Record RAC Canada in 2000, Harmonie Award in 2001 and Diapason d'Or in 2007. The CD *Héroïque* with Bryan Hymel was nominated for the International Opera Award in 2016 and the CD *Bohemian Rhapsody* with Gábor Boldoczki was nominated for the International Classical Music Award (ICMA) in 2017. The *Ravel, Debussy & Bizet* CD received excellent reviews from the *London Sunday Times*, *Gramophone* and the *BBC Music Magazine*, which included it in its top ten recordings of the week; the CD with the acclaimed tenor Benjamin Bernheim for Deutsche Grammophon from November 2019 won an Opus Klassik Award and numerous accolades in international press. The orchestra has been directed by the French conductor Emmanuel Villaume since the 2015/2016 season.

MEMBERS OF THE ORCHESTRA

**1st VIOLIN****Romana Špačková***concert master***Michal Sedláček***concert master***Miloslav Vrba***associate concert master***Martin Bialas****Zuzana Bialasová****Hana Dostálová Roušarová****Lucia Fulka Kopsová****Roman Hranička****Hana Kubisová****Jana Svobodová****Veronika Panochová****2nd VIOLIN****Jan Adam***principal***Iva Středová***co-principal***Marta Hajšmanová****Kateřina Krejčová****Lukáš Kroft****Anna Masojídková****Lada Ševčíková****VIOLA****Stanislav Svoboda***principal***Dagmar Mašková***co-principal***Anna Cibulková****Emi Sawahata****Zdeněk Suchý****CELLO****Lukáš Pospíšil***principal***Balázs Adorján***co-principal***Teodor Brcko****Petra Pospíšilová****Judita Škodová****DOUBLE BASS****Pavel Klečka***principal***Dalibor Tkadlčík***co-principal***Jakub Amcha****Ivana Vondrušková****FLUTE****Jan Ševčík***principal***Oto Reiprich****Lenka Řeřichová****OBOE****Lenka Filová***principal***Jan Souček****Jaroslava Čiháková Tajanovská****CLARINET****Jindřich Pavliš***principal***Jan Brabec****Vojtěch Nýdl****BASSOON****Václav Fůrbach***principal***Tomáš Františ****Jiří Jech****Petr Sedlák****FRENCH HORN****Zdeněk Vašina***principal***Jakub Hořejší****Mikuláš Koska****Kryštof Koska****Adéla Psohlavcová****Jan Vobořil****TRUMPET****Svatopluk Zaal***principal***Karel Hons****TROMBONE****Stanislav Penk****PERCUSSION****Ivan Hoznedr***principal***Pavel Rehberger**

EMMANUEL VILLAUME



The Music Director and Chief Conductor of the PKF—Prague Philharmonia, Emmanuel Villaume, continues his tenure this season also as the Music Director of The Dallas Opera.

A frequent collaborator with major international opera houses, Emmanuel leads performances at The Metropolitan Opera, Lyric Opera of Chicago, Washington National Opera, San Francisco Opera, Los Angeles Opera, Opera Theatre of Saint Louis, Santa Fe Opera, Royal Opera House Covent Garden, Liceu Barcelona, Montreal Opera, Teatro Colón, Opéra de Paris, Théâtre du Capitole de Toulouse, Bayerische Staatsoper, Deutsche Oper Berlin, Hamburgische Staatsoper, Cologne Opera, Teatro La Fenice, Teatro Regio di Torino and Teatro Real Madrid.

Also leading a distinguished career on the international symphonic platform, Emmanuel collaborates with esteemed ensembles such as Chicago Symphony Orchestra, Los Angeles Philharmonic Orchestra, San Francisco Symphony, Boston Symphony Orchestra, Montreal Symphony Orchestra, Royal Philharmonic Orchestra, Orchestre de Paris, Danish National Symphony Orchestra, Münchner Rundfunkorchester, Sydney Symphony Orchestra, Melbourne Symphony Orchestra and NHK Tokyo.

Villaume studied at the Conservatoire de Strasbourg and at Sorbonne University in Paris (literature, philosophy, music) and holds an Honorary Doctorate from the University of Indianapolis.



ORCHESTRAL SERIES A

AD-VENTURES INVEST
ALONGSIDE NEXT GENERATION

PARTNER OF THE ORCHESTRAL SERIES



This year's season is exceptional for the PKF–Prague Philharmonia; it is our 30th anniversary season. Such a special occasion deserves a special program: festive, representative, full of works in which the PKF shines and which have a deeper meaning. Thus, the PKF–Prague Philharmonia presents a program to its audience which is perhaps even more personal than in previous years—and in which our subscribers get to know their orchestra even more closely. At the same time, the concept reflects the Year of Czech Music, which will feature not only compositions by well-known great masters, but also those unjustly neglected ones. Dvořák, Suk or Smetana will not be left out, but you will also hear Kaprálová, Pichl and Veit. The exclusivity of the season is evidenced by the musicians

who will appear at the concerts. We will hear the pianist George Li, the violinist Midori, and the great trumpeter Lucienne Renaudin Vary; at the second concert, the members of the orchestra's wind section will also play as soloists. The Chief Conductor Emmanuel Villaume will take the baton for five concerts, while the other concerts will be conducted, for example, by Oscar Jockel and Christoph-Mathias Mueller.

A1 SUK. DVOŘÁK

Wednesday, 6 September 2023, 7:30 pm, Dvořák Hall, Rudolfinum

Jan Vogler — *cello***Emmanuel Villaume** — *conductor***JOSEF SUK***Scherzo fantastique*, Op. 25**ANTONÍN DVOŘÁK**

"American Suite" in A major, Op. 98 B 190

ANTONÍN DVOŘÁK

Cello Concerto in B minor, Op. 104 B 191

A2 SCHUBERT. MOZART. DVOŘÁK. VOŘÍŠEK

Sunday, 1 October 2023, 7:30 pm, Dvořák Hall, Rudolfinum

Christoph-Mathias Mueller — *conductor***FRANZ SCHUBERT**

Overture in the Italian style in D major, D 590

WOLFGANG AMADEUS MOZART*Sinfonia Concertante* in E flat major for oboe, clarinet,

French horn, bassoon and orchestra, KV 297b

ANTONÍN DVOŘÁK*Nocturne* in B major, Op. 40 B 47**JAN VÁCLAV HUGO VOŘÍŠEK**

Symphony in D major, Op. 24

A3 RODIN. SZYMANOWSKI. BEETHOVEN

Sunday, 12 November 2023, 7:30 pm, Dvořák Hall, Rudolfinum

Mykola Diadiura — *conductor***Vadim Gluzman** — *violin***ALEXANDER RODIN***Holy God***KAROL SZYMANOWSKI**

Violin Concerto No. 2, Op. 61

LUDWIG VAN BEETHOVEN

Symphony No. 4 in B flat major, Op. 60

A4 KREJČÍ. HUMMEL. VEIT. MENDELSSOHN-BARTHOLDY

Sunday, 3 December 2023, 7:30 pm, Dvořák Hall, Rudolfinum

Emmanuel Villaume — *conductor***Lucienne Renaudin Vary** — *trumpet***IŠA KREJČÍ**

Little Suite for String Orchestra

JOHANN NEPOMUK HUMMEL

Trumpet Concerto in E flat major

VÁCLAV JINDŘICH VEIT

Overture, Op. 17

FELIX MENDELSSOHN-BARTHOLDY

Symphony No. 4 in A major "Italian", Op. 90

A5 BEETHOVEN. PICHL. BERLIOZ. CHERUBINI

Sunday, 14 January 2024, 7:30 pm, Dvořák Hall, Rudolfinum

Emmanuel Villaume — *conductor***Pražský filharmonický sbor****LUDWIG VAN BEETHOVEN***The Ruins of Athens*, overture to the play, Op. 113**VÁCLAV PICHL**

Symphony in B flat major

HECTOR BERLIOZ*King Lear*, Op. 4**LUIGI CHERUBINI**

Requiem No. 1 in C minor

A6 DVOŘÁK

Monday, 4 March 2024, 7:30 pm, Dvořák Hall, Rudolfinum

Eugene Tzigane — *conductor***Midori** — *violin***ANTONÍN DVOŘÁK***Vanda*, overture to the opera, Op. 25 B 97

Violin Concerto in A minor, Op. 53 B 96

Symphony No. 8 in G major, Op. 88 B 163

A7 SMETANA. GLASS. DVOŘÁK

Monday, 8 April 2024, 7:30 pm, Dvořák Hall, Rudolfinum

Emmanuel Villaume — *conductor***Anne Akiko Meyers** — *violin***BEDŘICH SMETANA***The Bartered Bride*, overture to the opera**PHILIP GLASS**

Violin Concerto No. 1

ANTONÍN DVOŘÁK

Romance for Violin and Orchestra in F minor, Op. 11 B 39

Symphony No. 4 in D minor, Op. 13 B 41

A8 JANÁČEK. MARTIN. MILHAUD. SCHUMANN

Saturday, 11 May 2024, 7:30 pm, Dvořák Hall, Rudolfinum

Oscar Jockel — *conductor***Valentine Michaud** — *saxophone***LEOŠ JANÁČEK**

Suite for String Orchestra

FRANK MARTIN*Ballade* for saxophone and orchestra**DARIUS MILHAUD***Scaramouche*, Op. 165c**ROBERT SCHUMANN**

Symphony No. 1 in B flat major, Op. 38, "Spring"

A9 MARTINŮ. LISZT. KAPRÁLOVÁ. BEETHOVEN

Saturday, 15 June 2024, 7:30 pm, Dvořák Hall, Rudolfinum

Emmanuel Villaume — *conductor***George Li** — *piano***BOHUSLAV MARTINŮ**

Overture for Orchestra H 345

FRANZ LISZT

Piano Concerto No. 1 in E flat major, S 124

Hungarian Fantasy for piano and orchestra**VÍTĚZSLAVA KAPRÁLOVÁ***Suita Rustica*, Op. 19**LUDWIG VAN BEETHOVEN**

Symphony No. 1 in C major, Op. 21

A1 SUK. DVOŘÁK

Wednesday, 6 September 2023, 7:30 pm
Dvořák Hall, Rudolfinum

Opening concert of the 30th concert season

Jan Vogler — *cello*

Emmanuel Villaume — *conductor*

JOSEF SUK

Scherzo fantastique, Op. 25

ANTONÍN DVOŘÁK

"American Suite" in A major, Op. 98 B 190

ANTONÍN DVOŘÁK

Cello Concerto in B minor, Op. 104 B 191

CZK 1 300 | 900 | 700 | 500 (SL/E*) | CZK 200 (ST*)

*SL/E partial view and organ gallery above the stage

*ST standing

The PKF—Prague Philharmonia will enter its 30th anniversary season with what is intrinsically deeply rooted in it: music by Czech composers. In the history of Czech music, it would be hard to find composers as close to each other as Josef Suk and Antonín Dvořák. Suk was a pupil of Dvořák, and especially in his early works the influence of his teacher is clearly noticeable. Their professional connections soon became very personal—Suk not only got on with Dvořák, but also with his daughter Otilie, whom he married in 1898. Of course, Josef Suk was not the only composer influenced by Dvořák. Dvořák participated in the development of Czech music with a large number of his own works, and one of his creative peaks came during his stay in the USA. There he wrote his *Cello Concerto in B minor*, a work which, despite Dvořák's famous complaint that the cello "whinges up above, and grumbles down below", has become a seminal piece of literature for this instrument. The concerto, which abounds with Dvořák's characteristic melodic invention, was written at the very end of his American sojourn. At the same time, he created the "American" *Suite in A major*, in which he bids farewell to the "New World" using techniques derived from the music of that country. The soloist of the evening will be the cellist Jan Vogler, a great lover of the music of Dvořák, who last year recorded an award-winning album of Dvořák's chamber pieces.

A2 SCHUBERT. MOZART. DVOŘÁK. VOŘÍŠEK

Sunday, 1 October 2023, 7:30 pm
Dvořák Hall, Rudolfinum

Christoph-Mathias Mueller — *conductor*

FRANZ SCHUBERT

Overture in the Italian style in D major, D 590

WOLFGANG AMADEUS MOZART

Sinfonia Concertante in E flat major for oboe, clarinet, French horn, bassoon and orchestra, KV 297b

ANTONÍN DVOŘÁK

Nocturne in B major, Op. 40 B 47

JAN VÁCLAV HUGO VOŘÍŠEK

Symphony in D major, Op. 24

CZK 900 | 760 | 580 | 300 (SL/E*) | CZK 150 (ST*)

*SL/E partial view and organ gallery above the stage

*ST standing

Although the PKF—Prague Philharmonia has developed over the 30 years of its existence into an orchestra that excels in music of any period and genre, one era has been its forte from the very beginning: Classicism. Under the baton of its founder and Chief Conductor Jiří Bělohlávek, the Prague Chamber Philharmonic Orchestra specialized in the music of Haydn, Mozart, Beethoven as well as Schubert, the youngest of them. At the same time, there was no shortage of Czech music from this era either: the most frequently played works included the charming *Symphony in D major* by Jan Václav Hugo Voříšek (aka Johann Hugo Worzischek), which the PKF still plays from the sheet music with Bělohlávek's notes. Voříšek's composition will not be the only piece this evening that has left an indelible mark on the orchestra's history. Mozart's *Sinfonia Concertante in E flat major* was heard at the PKF's first ever public concert in 1994. The solo parts will be performed by the PKF—Prague Philharmonia's core players: one of them, Tomáš Františ, also appeared as soloist at the above-mentioned premiere concert. Christoph-Mathias Mueller, a Swiss conductor born in Peru and winner of the prestigious OPUS Klassik Award for 2020, will take the baton.

A3 RODIN. SZYMANOWSKI. BEETHOVEN

Sunday, 12 November 2023, 7:30 pm

Dvořák Hall, Rudolfinum

Mykola Diadiura — *conductor***Vadim Gluzman** — *violin***ALEXANDER RODIN***Holy God***KAROL SZYMANOWSKI**

Violin Concerto No. 2, Op. 61

LUDWIG VAN BEETHOVEN

Symphony No. 4 in B flat major, Op. 60

1 300 | 900 | 700 | 500 Kč (SL/E*) | 200 Kč (ST*)

*SL/E partial view and organ gallery above the stage

*ST standing

In February 2022, the PKF—Prague Philharmonia was one of the first Czech ensembles to unequivocally declare its support for Ukraine after the invasion. However, we did not want our support for Ukrainian musicians to remain symbolic—and so you will be able to get to know some of them during the third subscription evening. The concert will be conducted by Mykola Diadura, artistic director of the Ukrainian National Opera, who studied with the legendary Leonard Bernstein. The program will include the music of this country. The evening will open with *Holy God* by contemporary Ukrainian composer Oleksandr (aka Alexander) Rodin. We can also find a Ukrainian trace in Szymanowski—although he became a key figure in Polish music of the early 20th century, he was born in what is now Tymoshivka, Ukraine. His *Violin Concerto No. 2*, one of Szymanowski's last works, contains neo-folk elements represented by hints of Polish folk music. The solo part will be performed by Vadim Gluzman, an Israeli violinist of Ukrainian origin, winner of the Diapason d'Or. The concert will close with non-Slavic music: one of Ludwig van Beethoven's overlooked works, the exuberant *Symphony No. 4*.

A4 KREJČÍ. HUMMEL. VEIT. MENDELSSOHN-BARTHOLDY

Sunday, 3 December 2023, 7:30 pm

Dvořák Hall, Rudolfinum

Emmanuel Villaume — *conductor***Lucienne Renaudin Vary** — *trumpet***IŠA KREJČÍ**

Little Suite for String Orchestra

JOHANN NEPOMUK HUMMEL

Trumpet Concerto in E flat major

VÁCLAV JINDŘICH VEIT

Overture, Op. 17

FELIX MENDELSSOHN-BARTHOLDY

Symphony No. 4 in A major "Italian", Op. 90

CZK 1 300 | 900 | 700 | 500 (SL/E*) | CZK 200 (ST*)

*SL/E partial view and organ gallery above the stage

*ST standing

When we talk about Czech music, we usually think of Smetana, Dvořák, Janáček or Martinů. However, many other interesting composers have lived and worked in the Czech lands in every era: our fourth subscription concert will be proof of this. Although the name of the Neo-Classical composer Iša Krejčí is not unknown to Czech audiences, his work is not systematically presented. The talent and wit with which Krejčí handled his 18th-century inspirations earned him the affectionate nickname Mozartino in Prague music circles. A hundred years earlier, in the early 19th century, the now almost forgotten composer Václav Jindřich Veit (aka Wenzel Heinrich Veit) had delighted the people of Prague with his music. This early Romantic composer was well acquainted with the music of Beethoven and Schubert and was one of the most popular composers of his time. However, he did not devote most of his life to music: he earned his living as a clerk at Prague City Hall. His contemporary, Johann Nepomuk Hummel, born in what is now Bratislava, Slovakia, was a pupil of Mozart. Hummel's virtuoso *Trumpet Concerto in E flat major*, the most advanced work for the instrument in its time, will be performed by one of the most outstanding trumpeters of the emerging generation, the still-24-year-old "trumpet sensation" Lucienne Renaudin Vary.

A5 BEETHOVEN. PICHL. BERLIOZ. CHERUBINI

Sunday, 14 January 2024, 7:30 pm
Dvořák Hall, Rudolfinum

Emmanuel Villaume — conductor
Prague Philharmonic Choir

LUDWIG VAN BEETHOVEN

The Ruins of Athens, overture to the play, Op. 113

VÁCLAV PICHL

Symphony in B flat major

HECTOR BERLIOZ

King Lear, Op. 4

LUIGI CHERUBINI

Requiem No. 1 in C minor

CZK 900 | 760 | 580 | 300 (SL/E*) | CZK 150 (ST*)

*SL/E partial view and organ gallery above the stage

*ST standing

We have already mentioned that Classicism and the music of Czech composers has a special place in the repertoire of the PKF — Prague Philharmonia. An interesting combination of these specializations will be provided by the fifth subscription concert: *Symphony in B flat major* by Václav Pichl (aka Wenzel Pichl), a Czech Classical composer of the 18th century, whose legacy includes almost a hundred symphonies. However, the PKF will also play works at this concert which it has adopted and grown to love through its collaboration with its current Chief Conductor, Emmanuel Villaume. Indeed, this Strasbourg native has introduced the members of the PKF to what is closest to his heart, making them exceptional interpreters of French music. French music will be represented by works by Hector Berlioz and Luigi Cherubini, who, although originally from Florence, lived most of his life in Paris. Cherubini was the director of the Paris Conservatoire; he met Berlioz as a young man, but due to the generation gap they did not befriend each other. Berlioz was interested in the emerging Romanticism, while Cherubini remained faithful to the ideals of Classicism for the rest of his life. Cherubini's *Requiem in C minor* marked the symbolic end of this era: on 29 March 1827 it was performed at the funeral of Ludwig van Beethoven, the crowning glory of the Classical era.

A6 DVOŘÁK

Monday, 4 March 2024, 7:30 pm
Dvořák Hall, Rudolfinum

Eugene Tzigane — conductor
Midori — violin

ANTONÍN DVOŘÁK

Vanda, overture to the opera, Op. 25 B 97

Violin Concerto in A minor, Op. 53 B 96

Symphony No. 8 in G major, Op. 88 B 163

CZK 1 300 | 900 | 700 | 500 (SL/E*) | CZK 200 (ST*)

*SL/E partial view and organ gallery above the stage

*ST standing

The program of the sixth subscription concert features only Dvořák, fully honoring the Year of Czech Music. Years ending with the number four are extremely significant for Czech music. This number marks the birth dates of Smetana, Janáček and Suk, as well as the year of Dvořák's death. In this program we will look at Dvořák's music from different angles: each composition falls into a different genre and a different stage of Dvořák's career. The opera *Vanda*, inspired by French grand opera, was composed relatively early in his career; the *Violin Concerto* of the early 1880s is one of the highlights of Dvořák's Slavic period. This time, it will be performed on a very special instrument, the 1734 "ex-Hubermann" Guarneri, by Midori, an exceptional artist and recipient of the Kennedy Center Honors. In *Symphony No. 8* from 1889, Dvořák develops the melodic and lyrical style influenced by Czech and Slavic traditions. This composition, imbued with brightness and joy, is one of Dvořák's most frequently performed works, and we are deliberately including it in our anniversary season. *Symphony No. 8* was part of our 2017 American tour, one of the first major engagements with our then-new Chief Conductor Emmanuel Villaume, and it was a huge success on the tour, laying down the foundation of an extraordinary relationship between the Chief Conductor and his orchestra.

A7 SMETANA. GLASS. DVOŘÁK

Monday, 8 April 2024, 7:30 pm
Dvořák Hall, Rudolfinum

Emmanuel Villaume — conductor
Anne Akiko Meyers — violin

BEDŘICH SMETANA

The Bartered Bride, overture to the opera

PHILIP GLASS

Violin Concerto No. 1

ANTONÍN DVOŘÁK

Romance for Violin and Orchestra in F minor, Op. 11 B 39
Symphony No. 4 in D minor, Op. 13 B 41

CZK 1 300 | 900 | 700 | 500 (SL/E*) | CZK 200 (ST*)

*SL/E partial view and organ gallery above the stage

*ST standing

The year 2024 is not only the Year of Czech Music, but also the year in which we celebrate the bicentenary of the birth of Bedřich Smetana, the founder of the Czech musical tradition. We will hear Smetana's music at the beginning of the seventh subscription concert: it will open with the energetic overture to his most famous opera, *The Bartered Bride*. Smetana's efforts to create a national Czech music were then naturally taken up by Antonín Dvořák. Dvořák's musical language is often described as more spontaneous and less complex than that of Smetana. The differences between these two composers led to the division of the musical community into the Smetana and Dvořák camps, which came into sharp (and absurd) conflict especially in the years after Dvořák's death. The program of the concert will symbolically reconcile these groups: after all, time itself has shown that Dvořák and Smetana are absolutely equal in terms of their art. A contrasting element to the music of the two Czech classics will be the *Violin Concerto No. 1* by Philip Glass. This piece, with its extensive repetitions typical of Glass, will be performed by Anne Akiko Meyers. Her passion for contemporary music is also evidenced by a number of works written especially for her: let us mention compositions by Einojuhani Rautavaara and Arvo Pärt.

A8 JANÁČEK. MARTIN. MILHAUD. SCHUMAN

Saturday, 11 May 2024
Dvořák Hall, Rudolfinum

Oscar Jockel — conductor
Valentine Michaud — saxophone

LEOŠ JANÁČEK

Suite for String Orchestra

FRANK MARTIN

Ballade for saxophone and orchestra

DARIUS MILHAUD

Scaramouche, Op. 165c

ROBERT SCHUMANN

Symphony No. 1 in B flat major, Op. 38, "Spring"

CZK 1 300 | 900 | 700 | 500 (SL/E*) | CZK 200 (ST*)

*SL/E partial view and organ gallery above the stage

*ST standing

The last-but-one concert of the orchestral subscription series offers perhaps the most varied program of all nine concerts. We will begin with Leoš Janáček, an unprecedented phenomenon in Czech music, whose compositional language, influenced by his Moravian background, acquired an extraordinarily original quality. However, we will return to the outset of his fascinating journey. *Suite for String Orchestra* was written as Janáček's first orchestral work in the late 1870s — yet Janáček did not achieve his greatest fame until three decades later. Robert Schumann's *Symphony No. 1 in B flat major "Spring"* is also a work that foreshadows the great future of its brilliant creator, one of the most important representatives of German Romanticism. In the middle of the evening, two contrasting compositions for solo saxophone and orchestra will be heard. Frank Martin, a 20th-century Swiss composer, in his gloomy, lyrical *Ballade* presents the saxophone as a sensitive, malleable instrument. The sparkling *Scaramouche* by Darius Milhaud, a member of the Neo-Classical group Les Six, brings the virtuosic dimension of the saxophone to the fore. The solo in both works is played by Valentine Michaud, the first ever female saxophone soloist to perform with the Vienna Philharmonic Orchestra. The concert will be directed by the rising star Oscar Jockel, an assistant conductor of the Berlin Philharmonic Orchestra.

A9 MARTINŮ. LISZT. KAPRÁLOVÁ. BEETHOVEN

Saturday, 15 June 2024, 7:30 pm

Dvořák Hall, Rudolfinum

Emmanuel Villaume — conductor

George Li — piano

BOHUSLAV MARTINŮ

Overture for Orchestra H 345

FRANZ LISZT

Piano Concerto No. 1 in E flat major, S 124

Hungarian Fantasy for piano and orchestra

VÍTĚZSLAVA KAPRÁLOVÁ

Suita Rustica, Op. 19

LUDWIG VAN BEETHOVEN

Symphony No. 1 in C major, Op. 21

CZK 1 300 | 900 | 700 | 500 (SL/E*) | CZK 200 (ST*)

*SL/E partial view and organ gallery above the stage

*ST standing

We have begun the season with Suk and Dvořák, composers who were close to each other both professionally and personally. It will therefore be fitting if we close it with another pairing from Czech classical music. Much has been said and written about the relationship between Bohuslav Martinů and Vítězslava Kaprálová: sometimes these comments are based on the personal correspondence between the two, sometimes they are mere fiction. What is certain, however, is that Martinů was unwaveringly convinced of his student's great talent and that Kaprálová does not stand in the history of Czech music side by side with the greatest masters only because she died at the young age of 25. She still managed to live her short life to the full. She studied with Talich and Novák, was the first woman to conduct the Czech Philharmonic Orchestra, and wrote over 40 compositions. One of them is *Suita Rustica*, influenced by Czech folklore and the music of Igor Stravinsky. Folklore inspirations can also be found in the works of the Neo-Romantic Franz Liszt. His lively *Fantasia on Hungarian Folk Melodies* [Hungarian Fantasy] and *Piano Concerto No. 1* will be performed by George Li, a young American pianist and silver medal winner at the Tchaikovsky Competition. At the end of our 30th season, we will return to one of the staples in our repertoire, concluding with Ludwig van Beethoven's *Symphony No. 1 in C major*.

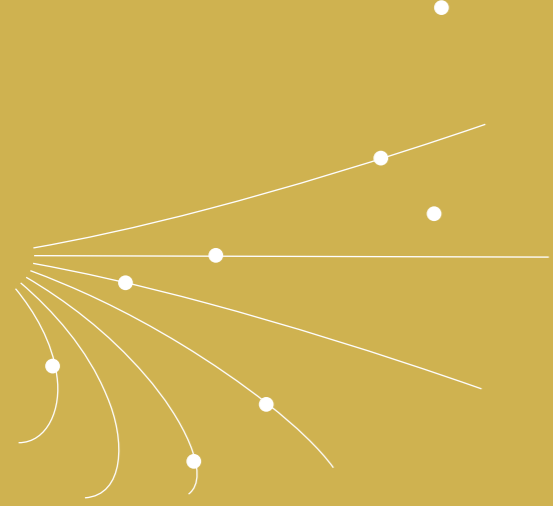
Subscription full price CZK 5 500 | 4 800 | 4 100 | 3 000

Subscription senior (65+) CZK 5 000 | 4 300 | 3 800 | 2 700

Individual tickets sales:

- children up to 15 years CZK 100 (all ticket categories)
- ISIC card holders CZK 100 (3rd and 4th category)
- ITIC card holders CZK 200 (3rd and 4th category)
- ZTP and ZTP-P holders: 50% discount for all concerts in the season





PKF—LOBKOWICZ SERIES

L



IN COOPERATION



PATRONS

MILAN
POPILKA



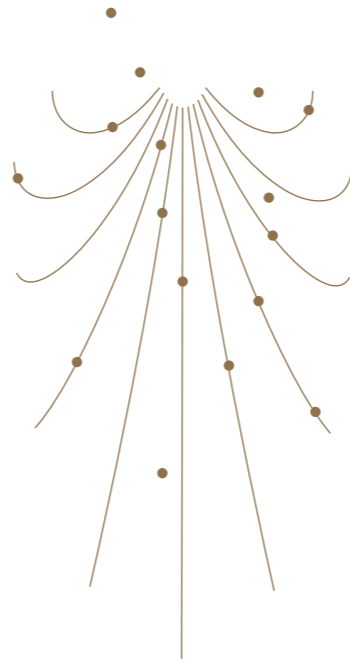
PARTNERS



Siko
KOUPELNY • KUCHYNE

euro

MEDIA PARTNER



Stories from the Arts

The PKF—Prague Philharmonia donor's subscription series in close collaboration with the Lobkowitz family

Support the PKF—Prague Philharmonia artistic plans. Join us in the stories that have made art history in a unique atmosphere among the remarkable Lobkowitz Collections at Prague Castle. Give yourself and your loved ones unforgettable moments with one of the best orchestras in Europe and let yourself be carried away by the art of top soloists. Thank you for your willingness to share a common passion and the ethereal beauty that music brings to our lives.

Dana Syrová
Director of the PKF—Lobkowitz Series

L IN SHORT

- Four gatherings at the Lobkowitz Palace at Prague Castle
- Tickets include entry to the Lobkowitz Collections, a welcome drink, a curator's lecture on the evening's theme, the concert, and an after-concert meeting with the musicians with refreshments
- The season ticket is valid for a calendar year and is transferable, covers all four concerts in the series, a designated seat in the hall, and an invitation to all of the evening's activities
- Price of a season ticket to all four evenings: CZK 28 000
- Price of an individual ticket: CZK 10 000
- A part of the subscription can be paid in the form of a donation intended directly to support the activities of the PKF—Prague Philharmonia. For companies we also offer the possibility of advertising.

Contact for reservations and other information:
Dana Syrová, Director of the PKF—Lobkowitz Series
syrova@pkf.cz

L1 MOZART. MOUSSA

Tuesday, 25 April 2023, 7:00 pm
Lobkowitz Palace

Andrew von Oeyen — *piano, artistic direction*

WOLFGANG AMADEUS MOZART

Piano Concerto No. 14 in E flat major, KV 449

SAMY MOUSSA

Orpheus for piano and chamber orchestra

WOLFGANG AMADEUS MOZART

Piano Concerto No. 20 in D minor, KV 466

L2 RAVEL. DEBUSSY. BEETHOVEN

Wednesday, 14 June 2023, 7:00 pm
Lobkowitz Palace

Emmanuel Villaume — *conductor*

Emmanuel Ceysson — *harp*

MAURICE RAVEL

Introduction and Allegro

CLAUDE DEBUSSY

Dances for harp and string orchestra

LUDWIG VAN BEETHOVEN

Symphony No. 2 in D major, Op. 36

L3 ROTA. VILLA-LOBOS.**PIAZZOLLA**

Monday, 11 September 2023, 7:00 pm
Lobkowitz Palace

Alexandra Tirsu — *violin*

Michal Sedláček — *artistic direction*

NINO ROTA

Concerto for String Orchestra

HEITOR VILLA-LOBOS

Bachianas Brasileiras No. 4 (*Prelude. Introdução*)

ASTOR PIAZZOLLA

The Four Seasons of Buenos Aires

L4 MOZART. HÄNDEL

Tuesday, 31 October 2023, 7:00 pm
Lobkowitz Palace

Matthew Newlin — *tenor*

Michal Sedláček — *artistic direction*

GEORG FRIEDRICH HÄNDEL

Overture to the oratorio *Samson*, HWV 57

Where'er you walk, aria from the musical drama *Semele*, HWV 58

Menuet from the oratorio *Samson*, HWV 57

Total Eclipse, aria from the oratorio *Samson*, HWV 57

LUKÁŠ SOMMER

World premiere of compositions for PKF — Prague Philharmonia

Vain Vitellia, Feria for string septet

Bach's Late Reggae

WOLFGANG AMADEUS MOZART

Va, dal furor portata, aria concertante KV 21

Si mostra la sorte, aria concertante KV 209

NICCOLÒ PAGANINI (arranged by Michal Sedláček)

The Carnival of Venice

WOLFGANG AMADEUS MOZART

Per pietà, non ricercate, aria concertante KV 420

L1 MOZART. MOUSSA

Tuesday, 25 April 2023, 7:00 pm
Lobkowicz Palace

Andrew von Oeyen — *piano, conductor*

WOLFGANG AMADEUS MOZART

Piano Concerto No. 14 in E flat major, KV 449

SAMY MOUSSA

Orpheus for piano and chamber orchestra

WOLFGANG AMADEUS MOZART

Piano Concerto No. 20 in D minor, KV 466

Subscription price CZK 28 000 | individual ticket CZK 10 000

Elegance and refinement: these are just some of the many qualities highly appreciated in Andrew von Oeyen's piano playing. He regularly performs as a soloist with leading world orchestras, such as the Los Angeles Philharmonic, the San Francisco Symphony and the New Japan Philharmonic. For his most recent recording from 2021 for the Warner Classics label, he chose works by Bach and Beethoven. The Juilliard graduate, whose 2022/2023 season also includes concerts with the BBC Symphony Orchestra, is not an unknown soloist to our audience. Andrew von Oeyen has already collaborated with the PKF—Prague Philharmonia in concerts, tours and recordings. At the first PKF—LOBKOWICZ subscription concert in 2023, however, Andrew will perform a less usual role: he will conduct directly from the piano.

L2 RAVEL. DEBUSSY. BEETHOVEN

Wednesday, 14 June 2023, 7:00 pm
Lobkowicz Palace

Emmanuel Villaume — *conductor*

Emmanuel Ceysson — *harp*

MAURICE RAVEL

Introduction and Allegro

CLAUDE DEBUSSY

Dances for harp and string orchestra

LUDWIG VAN BEETHOVEN

Symphony No. 2 in D major, Op. 36

Subscription price CZK 28 000 | individual ticket CZK 10 000

Charming and extraordinarily gifted: these are some of the attributes that music critics ascribe to the harpist Emmanuel Ceysson. A successful member of the Los Angeles Philharmonic and an award-winning soloist, he showed his extraordinary talent from early on: at age 16, he impressed the teachers at the entrance exams at the Paris Conservatoire. A winner of competitions, such as the ARD Munich and the USA International Harp Competition, he has performed with a number of orchestras, including the Bavarian Radio Orchestra and the Orchestre National de Lyon. He has given solo recitals in the most prestigious halls: in Vienna's Konzerthaus, London's Wigmore Hall and Munich's Gasteig. He is a visiting teacher at the Sibelius Academy and the Mannes School of Music.

L3 ROTA. VILLA-LOBOS. PIAZZOLLA

Monday, 11 September 2023, 7:00 pm
Lobkowicz Palace

Alexandra Tirsu — *violin*
Michal Sedláček — *artistic direction*

NINO ROTA
Concerto for String Orchestra
HEITOR VILLA-LOBOS
Bachianas Brasileiras No. 4 (Prelude. Introdução)
ASTOR PIAZZOLLA
The Four Seasons of Buenos Aires

Subscription price CZK 28 000 | individual ticket CZK 10 000

Alexandra Tirsu debuted as a soloist at the age of eight, and today she is one of the most promising violinists of the young generation. The Romanian-Moldavian virtuoso, laureate of prestigious international competitions in Osaka and Seoul and recent winner of the third prize at the ARD Munich competition, she is quickly gaining the attention of critics and fans of classical music. She has performed under the baton of conductors such as Semyon Bychkov and Dmitri Jurowski and collaborated with a number of leading contemporary performers, for example Sol Gabetta and Patricia Kopatchinskaja. She has played at the Musikverein in Vienna, the Elbphilharmonie in Hamburg and the Shanghai Oriental Arts Center. She currently plays an extremely rare Stradivari from 1699 that belonged to the legendary Ida Haendel.

L4 MOZART. HÄNDEL

Tuesday, 31 October 2023, 7:00 pm
Lobkowicz Palace

Matthew Newlin — *tenor*
Michal Sedláček — *artistic direction*

GEORG FRIEDRICH HÄNDEL
Overture to the oratorio *Samson*, HWV 57
GEORG FRIEDRICH HÄNDEL
Where'er you walk, aria from the musical drama *Semele*, HWV 58
GEORG FRIEDRICH HÄNDEL
Menuet from the oratorio *Samson*, HWV 57
GEORG FRIEDRICH HÄNDEL
Total Eclipse, aria from the oratorio *Samson*, HWV 57
LUKÁŠ SOMMER
World premiere of compositions for PKF — Prague Philharmonia
Vain Vitellia, Fera for string septet
Bach's Late Reggae
WOLFGANG AMADEUS MOZART
Va, dal furor portata, aria concertante KV 21

Subscription price CZK 28 000 | individual ticket CZK 10 000

WOLFGANG AMADEUS MOZART
Si mostra la sorte, aria concertante KV 209
NICCOLÒ PAGANINI (arranged by Michal Sedláček)
The Carnival of Venice
WOLFGANG AMADEUS MOZART
Per pietà, non ricercate, aria concertante KV 420

Matthew Newlin, a long-time member of the Deutsche Oper Berlin ensemble, has been winning over audiences and the professional public primarily through his sensitive renderings of lyrical operatic roles. Although his domain is mainly Mozart's operas, he has also shone in Verdi's *La Traviata* and Tchaikovsky's *Eugene Onegin*. He has a close relationship with early music: he appeared in Lully's *Atys* at the Opéra Royal de Versailles, he sang the music of Georg Friedrich Händel, for example, at the Festival d'Opéra Baroque & Romantique de Beaune. However, he is also close to Czech music — he has performed several times in Janáček's *The Diary of One who Disappeared*, which he has even provided with an English translation. Among his notable achievements off the opera stage are collaborations with Michael Tilson Thomas and his San Francisco Symphony.

EVENING'S PROGRAM

- 6:00 pm** Welcome drink and a tour of the exhibition
- 6:30 pm** Stories from the Arts.
The curators of the Lobkowitz Collections reveal their treasures
- 7:00 pm** Concert in the Imperial Hall
- 8:15 pm** Meeting the musicians over a glass of wine with refreshments prepared by the Chef of the Lobkowitz Palace

PKF – LOBKOWICZ Series Spring 2024

L1 THURSDAY, 4 APRIL 2024

Jamal Aliyev – cello

L2 WEDNESDAY, 12 JUNE 2024

Emmanuel Villaume – conductor

Sale of the subscription opens on 1 November 2023.





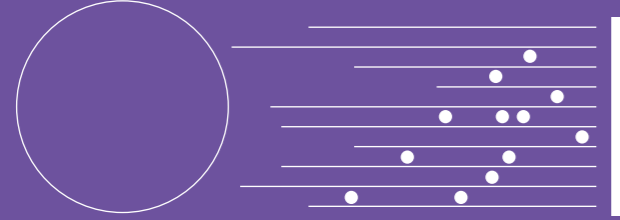
Patrons of the PKF—LOBKOWICZ Series 2023

JULIUS PRÜGER

“I like to support the PKF—Prague Philharmonia mainly because of the enthusiasm and outstanding performances that are always given at its concerts. I also appreciate the series at the Lobkowitz Palace for the opportunity to meet friends of the orchestra in an exceptional historical setting. It is with humility that we realize how lucky we are to be able to pass on the beauty of the message in music in this way.”

MILAN POPILKA

“PKF—Prague Philharmonia concerts are, among other things, a unique opportunity to meet in beautiful halls steeped in history. I am always impressed by the great performances of the soloists and the orchestra, as well as by the chosen program. I have been following and supporting the orchestra for a long time. I wish it consistently full concert halls!”



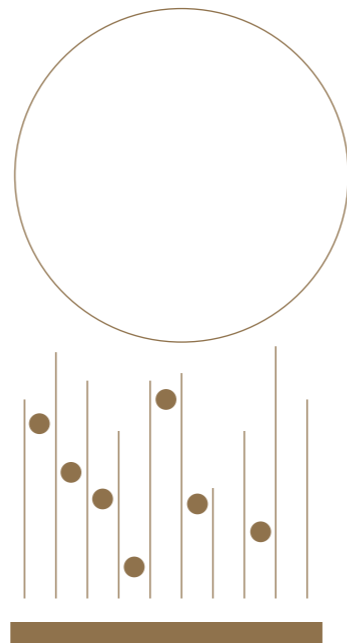
CHAMBER MUSIC SERIES K

Becker
Becker & Poliakoff

EUR OFFICE
PRAHA-BRUSEL A.S.

SUPPORT OF THE CHAMBER SERIES

PARTNER OF THE CHAMBER SERIES



The 30th anniversary season of the PKF–Prague Philharmonia is marked by celebrations of this prestigious Czech orchestra. Its leitmotif is **Czech music** and the anniversaries of eminent Czech composers, such as **Bedřich Smetana** (1824–1884), **Leoš Janáček** (1854–1928), **Josef Suk** (1874–1935), **Antonín Dvořák** (1841–1904), **Pavel Haas** (1899–1944), **Rafael Kubelík** (1914–1996), **Václav Jindřich Veit** (1806–1864), **Pavel Josef Vejvanovský** (1640–1693) and **Lukáš Matoušek** (born 1943). The February concert is dedicated to the Czech composer **Jan Novák** (1921–1984) and will be attended by his descendants, Dora Novak-Wilmington and Clara Nováková. The Chamber Music Series K will also include works by contemporary Czech composers commissioned by individual chamber ensembles.

55

The season will open on 25 September 2023 with the Belfiato Quintet together with a distinguished guest, tenor Petr Nekoranec. The series will conclude on 10 June 2024 with the Smetana Trio and clarinetist Jan Brabec. In the anniversary season we will hear, among others, the Bennewitz Quartet with cellist Lukáš Pospíšil and violist Karel Untermüller; Trio Incendio with violist Stanislav Svoboda; the Czech Brass; the Sedláček Quartet and many others.

Come and enjoy concerts with an unforgettable atmosphere in close proximity to our musicians and their masterful performances.

Martina Sermain
Artistic Programmer
of the Chamber Music Series **K**

K

K1 DVOŘÁK. HAAS. JANÁČEK

Monday, 25 September 2023, 7:30 pm

Baroque Refectory — Professed House, MFF UK

BELFIATO QUINTET**Oto Reiprich** — *flute***Jan Souček** — *oboe***Jiří Javůrek** — *clarinet***Jan Hudeček** — *bassoon***Kateřina Javůrková** — *French horn***Guest: Petr Nekoranec** — *tenor***K2 ZELENKA. REICHENAUER**

Monday, 16 October 2023, 7:30 pm

Baroque Refectory — Professed House, MFF UK

TRIO BDF**Vladislav Borovka** — *oboe***Tomáš Františ** — *bassoon***Olga Dlabačová** — *harpsichord***Guests:****Jan Fišer** — *violin***Václav Petr** — *cello***Barbora Trnčíková** — *oboe***K3 KUBELÍK. SUK. VEIT**

Monday, 27 November 2023, 7:30 pm

Baroque Refectory — Professed House, MFF UK

SEDLÁČEK QUARTET**Michal Sedláček** — *1st violin**(concert master of the PKF — Prague Philharmonia)***Jan Maceček** — *2nd violin***Tomáš Krejbich** — *viola***Matěj Štěpánek** — *cello***Guest: Jakub Fišer** — *viola***K4 DVOŘÁK. FOERSTER. JANÁČEK**

Monday, 18 December 2023, 7:30 pm

Baroque Refectory — Professed House, MFF UK

Lucie Hilscherová — *mezzo soprano***Jindřich Pavliš** — *clarinet***Ondřej Martinovský** — *viola***Miroslav Sekera** — *piano***K5 REJCHA. JEŽEK. JANÁČEK**

Monday, 29 January 2024, 7:30 pm

Baroque Refectory — Professed House, MFF UK

PRAGUE PHILHARMONIA WIND QUINTET**Jiří Ševčík** — *flute***Vladislav Borovka** — *oboe***Jan Brabec** — *clarinet***Václav Fůrbach** — *bassoon***Mikuláš Koska** — *French horn***Guest: Jindřich Pavliš** — *bass clarinet***K6 JAN NOVÁK**

Monday, 26 February 2024, 7:30 pm

Baroque Refectory — Professed House, MFF UK

Clara Nováková — *flute***Lukáš Pospíšil** — *cello**(principal cellist of the PKF — Prague Philharmonia)***Tomáš Františ** — *bassoon***Dora Novak-Wilmington** — *piano***Filip Martinka** — *piano***K7 SUK. MARTINŮ. DVOŘÁK**

Monday, 25 March 2024, 7:30 pm

Baroque Refectory — Professed House, MFF UK

TRIO INCENDIO**Filip Zaykov** — *violin***Vilém Petras** — *cello***Karolína Františová** — *piano***Guest: Stanislav Svoboda** — *viola***K8 VEJVANOVSKÝ. HORKÁ. FILAS**

Monday, 22 April 2024, 7:30 pm

Baroque Refectory — Professed House, MFF UK

CZECH BRASS**Marek Zvolánek** — *trumpet***Stanislav Masaryk and Martin Pavluš** — *trumpets***Lukáš Moška and Stanislav Penk** — *trombones***Pavel Debef** — *bass trombone***Karel Malimánek** — *tuba***K9 SMETANA. JANÁČEK. BRAHMS**

Monday, 27 May 2024, 7:30 pm

Baroque Refectory — Professed House, MFF UK

BENNEWITZ QUARTET**Jakub Fišer** — *1st violin***Štěpán Ježek** — *2nd violin***Jiří Pinkas** — *viola***Štěpán Doležal** — *cello***Guests: Lukáš Pospíšil** — *cello**(principal cellist of the PKF — Prague Philharmonia)***Karel Untermüller** — *viola***K10 NOVÁK. BEETHOVEN. SMETANA**

Monday, 10 June 2024, 7:30 pm

Baroque Refectory — Professed House, MFF UK

SMETANA TRIO**Jan Talich** — *violin* **Jan Páleníček** — *cello* **Jitka Čechová** — *piano***Guest: Jan Brabec** — *clarinet*

K1 DVOŘÁK. HAAS. JANÁČEK

Monday, 25 September 2023, 7:30 pm
Baroque Refectory—Professed House, MFF UK

BELFIATO QUINTET

Oto Reiprich—*flute*
Jan Souček—*oboe*
Jiří Javůrek—*clarinet*
Jan Hudeček—*bassoon*
Kateřina Javůrková—*French horn*

Guest: Petr Nekoranec—*tenor*

CZK 500 | 400 (senior citizens 65+) |
CZK 100 (students and children up to age 15)

ANTONÍN DVOŘÁK

String Quartet No. 12 in F major, Op. 96 B 179—the “American”
(in an arrangement for wind quintet by David Walter)

LEOŠ JANÁČEK

The Diary of One Who Disappeared (selection)

JAROSLAV PELIKÁN

Wind Quintet No. 2 “Concerto da Camera” (premiere)

PAVEL HAAS

Wind Quintet, Op. 10

Concert in cooperation with Musica Non Grata

**K2 ZELENKA. REICHENAUER**

Monday, 16 October 2023, 7:30 pm
Baroque Refectory—Professed House, MFF UK

TRIO BDF

Vladislav Borovka—*oboe*
Tomáš Františ—*bassoon*
Olga Dlabačová—*harpsichord*

Guests:

Jan Fišer—*violin*
Václav Petr—*cello*
Barbora Trnčíková—*oboe*

CZK 450 | 350 (senior citizens 65+) |
CZK 100 (students and children up to age 15)

ANTONÍN REICHENAUER

Trio Sonata in D major for violin, oboe and basso continuo

JAN DISMAS ZELENKA

Trio Sonata No. 3 in B flat major for violin, oboe, bassoon
and basso continuo, ZWV 181

Trio Sonata No. 5 in F major for two oboes,
bassoon and basso continuo, ZWV 181

ANTON ZIMMERMANN

Trio Sonata in F major for oboe, bassoon and basso continuo

K3 KUBELÍK. SUK. VEIT

Monday, 27 November 2023, 7:30 pm
Baroque Refectory—Professed House, MFF UK

SEDLÁČEK QUARTET

Michal Sedláček — 1st violin

(concert master of the PKF—Prague Philharmonia)

Jan Maceček — 2nd violin

Tomáš Krejbich — viola

Matěj Štěpánek — cello

Guest: Jakub Fišer — viola

CZK 450 | 350 (senior citizens 65+) |

CZK 100 (students and children up to age 15)

RAFAEL KUBELÍK

String Quartet No. 3

VÁCLAV JINDŘICH VEIT

String Quintet No. 5 in A major, Op. 29

JOSEF SUK

String Quartet No. 2, Op. 31

K4 DVOŘÁK. FOERSTER. JANÁČEK

Monday, 18 December 2023, 7:30 pm
Baroque Refectory—Professed House, MFF UK

Lucie Hilscherová — *mezzo soprano*

Jindřich Pavliš — *clarinet*

Ondřej Martinovský — *viola*

Miroslav Sekera — *piano*

ANTONÍN DVOŘÁK

Four Songs for voice and piano, Op. 82 B 157

MAX BRUCH

Acht Stücke [Eight Pieces] for clarinet,
viola and piano, Op. 83 (selection)

JOHANNES BRAHMS

Zwei Gesänge

Two Songs for Alto, Viola and Piano, Op. 91
(arranged for alto, clarinet and piano)

JOSEF BOHUSLAV FOERSTER

Two songs with viola and piano, Op. 91

LEOŠ JANÁČEK

On an Overgrown Path (selection)

JAROSLAV PELIKÁN

Commissioned composition for mezzo-soprano,
clarinet, viola and piano (premiere)

CZK 450 | 350 (senior citizens 65+) |

CZK 100 (students and children up to age 15)

K5 REJCHA. JEŽEK. JANÁČEK

Monday, 29 January 2024, 7:30 pm

Baroque Refectory—Professed House, MFF UK

PRAGUE PHILHARMONIA WIND QUINTETJiří Ševčík — *flute*Vladislav Borovka — *oboe*Jan Brabec — *clarinet*Václav Fůrbach — *bassoon*Mikuláš Koska — *French horn*Guest: Jindřich Pavliš — *bass clarinet*

CZK 450 | 350 (senior citizens 65+) |

CZK 100 (students and children up to age 15)

ANTON REICHA

Wind Quintet in D major, Op. 91 No. 3

JAN KLUSÁK*Music for a Fountain***JAROSLAV JEŽEK**

Wind Quintet

LEOŠ JANÁČEKWind Sextet *Youth***K6 JAN NOVÁK**

Monday, 26 February 2024, 7:30 pm

Baroque Refectory—Professed House, MFF UK

Clara Nováková — *flute*Lukáš Pospíšil — *cello**(principal cellist of the PKF—Prague Philharmonia)*Tomáš Františ — *bassoon*Dora Novak-Wilmington — *piano*Filip Martinka — *piano*

CZK 450 | 350 (senior citizens 65+) |

CZK 100 (students and children up to age 15)

JAN NOVÁK

Sonata Phantasia for cello, bassoon and piano

Sonata Super "Hoson Zes" for flute and piano

Capriccio for cello and piano

Sonata Tribus for flute, violin and piano

(in an arrangement for flute, cello and piano)

K7 SUK. MARTINŮ. DVOŘÁK

Monday, 25 March 2024, 7:30 pm

Baroque Refectory – Professed House, MFF UK

TRIO INCENDIOFilip Zaykov — *violin*Vilém Petras — *cello*Karolína Františová — *piano*Guest: Stanislav Svoboda — *viola*

CZK 450 | 350 (senior citizens 65+) |

CZK 100 (students and children up to age 15)

64

JOSEF SUK

Piano Quartet in A minor, Op. 1

BOHUSLAV MARTINŮ

Piano Trio No. 3 in C major, H 332

ANTONÍN DVOŘÁK

Piano Trio No. 4 in E minor, Op. 90 B 166 "Dumky"

K8 VEJVANOVSKÝ. HORKÁ. FILAS

Monday, 22 April 2024, 7:30 pm

Baroque Refectory – Professed House, MFF UK

CZECH BRASSMarek Zvolánek — *trumpet*Stanislav Masaryk and Martin Pavluš — *trumpets*Lukáš Mořka and Stanislav Penk — *trombones*Pavel Debef — *bass trombone*Karel Malimánek — *tuba***CLAUDIO MONTEVERDI***L'Orfeo*, opening fanfare**MARC ANTON CHARPENTIER**

Te Deum

PAVEL JOSEF VEJVANOVSKÝ

Sonata Vespertina

JOHANN HEINRICH SCHMELZER

Sonata A7

CZK 450 | 350 (senior citizens 65+) |

CZK 100 (students and children up to age 15)

65

SAMUEL CAPRICORNUS*O felix iucunditas***SAMUEL SCHEIDT***Galliarda Battaglia***JOHANN SEBASTIAN BACH***Badinerie**Air**Brandenburg Concerto No. 2* (3rd movement)**LUKÁŠ MATOUŠEK***Czech Intrada***JURAJ FILAS***It's Beautiful to Live* (1st movement)**KATEŘINA HORKÁ***Intuition* for brass septet (2nd movement)**JIŘÍ GEMROT***Grotesques***JAN VALTA***Bossa nova**Revólver y Tequila*

K9 SMETANA. JANÁČEK. BRAHMS

Monday, 27 May 2024, 7:30 pm

Baroque Refectory – Professed House, MFF UK

BENNEWITZ QUARTET**Jakub Fišer** — 1st violin**Štěpán Ježek** — 2nd violin**Jiří Pinkas** — viola**Štěpán Doležal** — cello**Guests:****Lukáš Pospíšil** — cello*(principal cellist of the PKF — Prague Philharmonia)***Karel Untermüller** — viola

CZK 500 | 400 (senior citizens 65+) |

CZK 100 (students and children up to age 15)

BEDŘICH SMETANA

String Quartet No. 2 in D minor

LEOŠ JANÁČEK

String Quartet No. 2 "Intimate Letters"

JOHANNES BRAHMS

String Sextet No. 2 in G major, Op. 36

K10 NOVÁK. BEETHOVEN. SMETANA

Monday, 10 June 2024, 7:30 pm

Baroque Refectory – Professed House, MFF UK

SMETANA TRIO**Jan Talich** — violin**Jan Páleníček** — cello**Jitka Čechová** — piano**Guest: Jan Brabec** — clarinet

CZK 500 | 400 (senior citizens 65+) |

CZK 100 (students and children up to age 15)

VÍTĚZSLAV NOVÁK

Piano Trio No. 2 in D minor, Op. 27, "Quasi una Ballata"

LUDWIG VAN BEETHOVEN

Clarinet Trio in B flat major, Op. 11

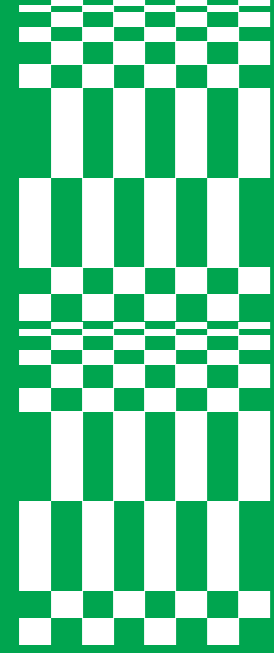
BEDŘICH SMETANA

Piano Trio in G minor, Op. 15

Subscription price

CZK 3 000 | 2 300 (seniors 65+)





CONTEMPORARY MUSIC SERIES S



CULTURAL COOPERATION
WITH THE ŠVANDA THEATER IN PRAGUE-SMÍCHOV

MUSIC SERIES S SUPPORTERS:
LIBOR WINKLER AND VERONIKA WINKLEROVÁ

CONTEMPORARY MUSIC DIALOGUES

In its 30th anniversary concert season the PKF–Prague Philharmonia will present six concerts with exceptional programs within the Contemporary Music Series S. As part of the anniversary celebrations, as of September 2023 the S series will move to a new venue to the place where it first started in the 2004/2005 season—the Švanda Theater in Prague’s district of Smíchov, more specifically in the Švanda Theater Studio, a newly renovated space which promises to be perfect for the S series. The series of six concerts this season will be dedicated to the contemporary Czecho-Slovak generation, contemporary art and the interconnection of genres. The individual concerts will be conceived as portraits of contemporary

composers who will be present as guests at the concerts, where they will communicate with the audience and where they may also appear as performers. They are renowned composers, active and working both in the Czech Republic and abroad. At the same time, their work is connected with other genres—film, architecture or opera. Traditionally, the performers will be members of the PKF–Prague Philharmonia and their guests. I believe that the S series in the Studio of the Švanda Theater will further spice up the already flavorsome program of PKF–Prague Philharmonia’s concerts in its 30th anniversary season.

Hana Dohnálková—Artistic Programmer
of the Contemporary Music Series **S**

S



**S1 MICHAL RATAJ (1975) —
BETWEEN GENRES**

Tuesday, 24 October 2023, 7:00 pm
Studio of the Švanda Theater

**S2 HANUŠ BARTOŇ (1960)
and MICHAL NEJTEK (1977) —
MUSIC AFTER 2000**

Tuesday, 12 December 2023, 7:00 pm
Studio of the Švanda Theater

**S3 JAROSLAV PELIKÁN (1970) —
BETWEEN FLUTE, COMPOSITION AND OPERA**

Tuesday, 13 February 2024, 7:00 pm
Studio of the Švanda Theater

**S4 SLOVAK FEMALE COMPOSERS:
Jana Kmitová (1976) and Lenka Novosedlíková (1989)**

Thursday, 14 March 2024, 7:00 pm
Studio of the Švanda Theater

S5 MARTIN HYBLER (1977) — PORTRAIT

Guests: Vilém Veverka (oboe) and Kateřina Englichová (harp)
Tuesday, 23 April 2024, 7:00 pm
Studio of the Švanda Theater

**S6 TWENTY YEARS OF THE S SERIES —
CONTEMPORARY PRAGUE MUSIC COCKTAIL**
Petr Wajsar — Jan Kučera — Miloš Orson Štědroň —
Martin Hybler

Tuesday, 18 June 2024, 7:00 pm
Studio of the Švanda Theater

Subscription price CZK 1 500 | 1 000 (senior citizens 65+)

S1 MICHAL RATAJ (1975) – BETWEEN GENRES

Tuesday, 24 October 2023, 7:00 pm
Studio of the Švanda Theater

MICHAL RATAJ

Depart into Light for clarinet, cello,
double bass and drums (2012)
Small Imprints for clarinet and live electronics (2013)
Cellacumata for solo cello and electronics (2020)
Beams for flute with electronics (2021)

Performers: Members of the PKF—Prague Philharmonia
and their guests

CZK 400 | 300 (senior citizens 65+) |
CZK 100 (students and children up to age 15)

Michal Rataj studied musicology at the Faculty of Arts of Charles University and composition at the Faculty of Music of the Academy of Performing Arts in Prague under Prof. Ivan Kurz and Prof. Milan Slavický. He also studied at Royal Holloway, University of London, Humboldt Universität zu Berlin, Musikhochschule Hans Eisler and Universität der Künste zu Berlin. In 2006 he received a Ph.D. with a dissertation on electroacoustic music and contemporary concepts in radio art.

Since 2000, he has worked as a music director and producer for Czech Radio in radio art and radio plays and was a member of the Ars Acustica Group of the European Broadcasting Union (EBU). Since 2002, he has been the editor of the *Radioateliér* program of Czech Radio Vltava and founded the rAdioCUSTICA internet portal, focused on mapping the contemporary domestic acoustic arts scene. Since 2014 he has been collaborating with Czech Radio externally. Rataj teaches composition and electroacoustic music at the Department of Composition of the Academy of Performing Arts and at the NYU in Prague, and has participated in a number of European festivals (V:NM Graz, AudioArt Kraków, NextWave, Multiplace). He has composed numerous soundtracks for film, radio, television and theater productions. The concert of the S series will feature Rataj's chamber and electroacoustic works, raising the question of the development of new musical trends in the Czech Republic and abroad.

S2 HANUŠ BARTOŇ (1960) AND MICHAL NEJTEK (1977) – MUSIC AFTER 2000

Tuesday, 12 December 2023, 7:00 pm
Studio of the Švanda Theater

HANUŠ BARTOŇ (1960)

"In D" for solo clarinet and soundtrack (2004)

HANUŠ BARTOŇ

32 Variations on the Note D for violin,
clarinet and cello (2016)

MICHAL NEJTEK (1977)

Tasted Thoughts for clarinet (2015)

HANUŠ BARTOŇ

Ten Miniatures for Wind Trio, Series II (2009)

MICHAL NEJTEK

Trois morceaux délicieux for clarinet, piano,
violin and cello (2016)

Performers: Members of the PKF—Prague Philharmonia
and their guests

CZK 400 | 300 (senior citizens 65+) |
CZK 100 (students and children up to age 15)

"Contemporary music (i.e., the music that is currently being created) suffers from one thing—the lack of repeat performances. In the vast majority of cases, the composer hears his work only in a premiere, with all the advantages and disadvantages that premieres entail (nervousness, energy, inaccuracy), and that is it. He has no chance to fix it, make corrections, get feedback... It is obvious that the development of the composer's style takes place in isolation, mostly without interaction with others. Worlds that are now seemingly very close to each other do not intersect at all. It is therefore very important and beneficial if there is the possibility of repeat performances and new interpretations of earlier works—the PKF and their Contemporary Music Series S deserve all the credit for this. And also for the fact that I will hear excellent performers and also Hanuš Bartoň's music, which has been dear to me for a long time (just like its composer)!" Michal Nejtek

"I have known Michal Nejtek for a long time. Today we are colleagues and we both teach composition at the Faculty of Music of the Academy of Performing Arts. I seem to like the note D, which forms the basis of two compositions of mine. Yet each of them is different!" Hanuš Bartoň

S3 JAROSLAV PELIKÁN (1970) – BETWEEN FLUTE, COMPOSITION AND OPERA

Tuesday, 13 February 2024, 7:00 pm
Studio of the Švanda Theater

JAROSLAV PELIKÁN (1970)

Trio Sonata in E for flute, cor anglais, marimba, cello and double bass (2019)

JAROSLAV PELIKÁN

Trio for two flutes and cello (2011)

JAROSLAV PELIKÁN

Piano Trio (2020)

FRANK MARTIN

Ballad for flute and piano (1939)

Performers: Members of the PKF—Prague Philharmonia and their guests

CZK 400 | 300 (senior citizens 65+) |
CZK 100 (students and children up to age 15)

Jaroslav Pelikán studied flute at the Prague Conservatory (with Jan Riedlbauch) and composition (with Jindřich Feld). He continued his studies at the Academy of Performing Arts in Prague (flute with František Čech and Jiří Válek; composition with Václav Riedlbauch and Juraj Filas). In the years 1992—1993 he worked as a freelance musician in Brazil. Since 1996 he has been principal flautist of the orchestra of the National Theater in Prague. As a soloist he appears with many orchestras in the Czech Republic and abroad. In 2007 he was invited as a teacher to attend master classes organized by the Federal University in Brazil.

As a composer, he mainly creates instrumental music. Worthy of note are his concertos for oboe (performed, among other places, in Tokyo in the presence of a Japanese princess), flute, guitar and double bass (commissioned for the International Prague Spring Music Competition in 2002), *Wind Quintet*, *Stabat Mater*, *Symphony in B flat major*, *Bethlehem Mass*, etc. For the oboe category of the Prague Spring Music Competition in 2008, he composed *Sonatina*.

The concert within the S series of the PKF—Prague Philharmonia will feature his chamber music, performed by him as a guest.

S4 SLOVAK FEMALE COMPOSERS: Jana Kmiťová (1976) and Lenka Novosedlíková (1989)

Thursday, 14 March 2024, 7:00 pm
Studio of the Švanda Theater

JANA KMIŤOVÁ (1976)

Etude for flute, violin and piano (1997)

LENKA NOVOSEDLÍKOVÁ (1989)

VDP for viola, piano and cello (2021)

JANA KMIŤOVÁ

At the Bottom of the Bottom for clarinet and piano (1998)

LENKA NOVOSEDLÍKOVÁ

Chamber Music I for any 2 groups of players;
conceptual composition with video projection

JANA KMIŤOVÁ

Abschiedsfragmente for oboe and string quartet (2006)

LENKA NOVOSEDLÍKOVÁ

Allusion to U. H. for 4 performers and electronics (2022)

Performers: Members of the PKF—Prague Philharmonia and their guests

Two ladies, representatives of the contemporary Slovak composition school, Jana Kmiťová and Lenka Novosedlíková, will present the importance of the female element among composers.

Jana Kmiťová (born 1976): Slovak composer, poet, painter, living and working in Vienna, graduated from the Academy of Performing Arts in Bratislava and the Universität für Musik und darstellende Kunst in Vienna. She successfully participated in important composition courses all over the world (France, Switzerland, Austria, Japan, etc.).

Lenka Novosedlíková (born 1989): Slovak composer and writer; studied composition and percussion at the Bratislava Conservatory, composition at the Academy of Performing Arts in Bratislava under Vladimír Godár and Marián Lejava, and percussion at the Janáček Academy of Performing Arts in Brno. She is a member of several prominent musical ensembles.

CZK 400 | 300 (senior citizens 65+) |
CZK 100 (students and children up to age 15)

S5 MARTIN HYBLER (1977) – PORTRAIT**Guests: Vilém Veverka (oboe) and Kateřina Englichová (harp)**Tuesday, 23 April 2024, 7:00 pm
Studio of the Švanda Theater**MARTIN HYBLER (1977)***Lonely Self* for solo violin, Op. 41 (2018)*Iason and Medea*, myth for oboe and harp, Op. 50 (2021)*Linking Up* for piano trio, Op. 37 (2014)*Earth's Gravity* for solo clarinet (2002)*DaDaDa DiDiDi Dialogue DüDüDü*, dialogue

for two string trios, Op. 53 (2022)

Baroque Unlimited for oboe and jazz trio (2021)*Gentlemen's Return* for oboe and jazz trio (2022)Performers: Members of the PKF — Prague Philharmonia
and their guests

CZK 400 | 300 (senior citizens 65+) |

CZK 100 (students and children up to age 15)

Martin Hybler graduated in composition at the Prague Conservatory (Prof. Bohuslav Řehoř), where he simultaneously also studied conducting with Miroslav Košler and Miriam Němcová. In the years 1999—2009 he continued his studies of composition at the Academy of Performing Arts in Prague in the composition class of Václav Riedlbauch and Ivan Kurz. He furthered his education through research fellowships abroad, namely at the Hochschule für Musik und Theater in Hamburg, and the ISA international composing classes in Müzzzuschlag, Austria. He has written many opuses of contemporary music, including scores for solo instruments, chamber ensembles and symphony orchestras. He is also a sought-after arranger for his stylistic versatility and feeling for the melodic line. He has arranged and instrumented compositions of the masters of classical music as well as pop and jazz (Miro Žbirka's *Symphonic Album*, major orchestral suites such as *Three Peanuts for Cinderella*, *Dracula*, Karel Svoboda's *Night at Karlštejn*). At tonight's concert he will perform as a composer and pianist together with the evening's distinguished guests — **Kateřina Englichová and Vilém Veverka**.

**S6 TWENTY YEARS OF THE S SERIES –
CONTEMPORARY PRAGUE MUSIC COCKTAIL****Petr Wajsar – Jan Kučera – Miloš Orson Štědroň – Martin Hybler**Tuesday, 18 June 2024, 7:00 pm
Studio of the Švanda TheaterPerformers: Members of the PKF — Prague Philharmonia
and their guests**THE PROGRAM WILL FEATURE EXCEPTIONAL AND
UNUSUAL TITLES, BOTH SERIOUS AND NON-SERIOUS,
BY FOUR COMPOSERS HISTORICALLY ASSOCIATED
WITH THE S SERIES.**

The PKF — Prague Philharmonia (formerly the Prague Philharmonic Chamber Orchestra) was the first orchestra in Prague to boldly include among its subscription series one series focused on contemporary music, originally entitled "The Beauty of Today". The first venue, where the series was launched, was the Švanda Theater in Prague's district of Smíchov. After that, the second stop was the concert hall

of the Prague Conservatory, and in recent years it was based in Prague's NoD Theater.

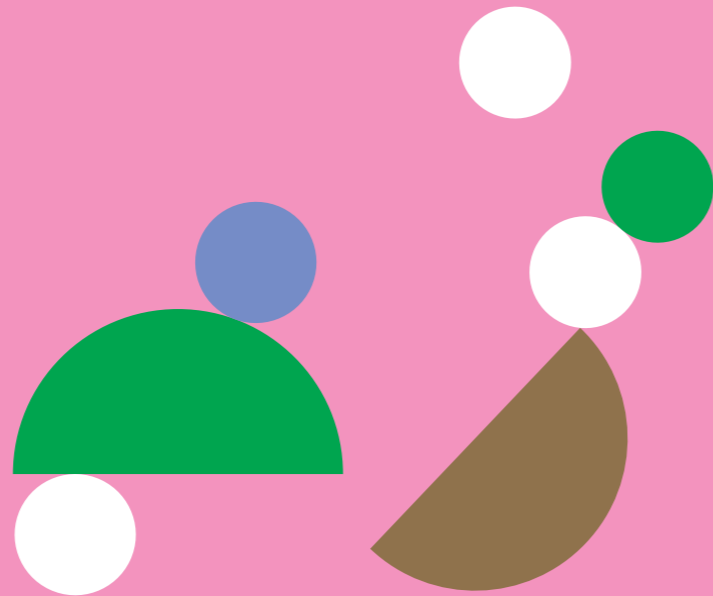
As part of the orchestra's 30th season and the upcoming 20th season of the S series, we decided to approach the Švanda Theater and return the concerts to their original location, albeit to the new space of the Švanda Theater Studio.

We will close the series of six concerts in the old-new space with a grand finale entitled "Twenty Years of the S Series — Contemporary Prague Music Cocktail"! For this special occasion we have addressed four composers of the younger generation who have successfully performed in the recent seasons of the S series and whose compositions have memorably enlivened its original program. I believe this will also be the case this evening, which shall be a crowning moment of the season.

CZK 400 | 300 (senior citizens 65+) |

CZK 100 (students and children up to age 15)

THE PKF FOR CHILDREN



EDUCATIONAL PROGRAM FOR CHILDREN

It is possible to cultivate a love of music from an early age.

The PKF—Prague Philharmonia is intensively involved in education. It was the first orchestra in the Czech Republic to organize concerts for children and parents. Its concerts for schools are also very popular. Educational concerts for nursery and primary school pupils are made to measure for young schoolchildren, who can better enjoy a live orchestra in an intimate atmosphere. For older pupils

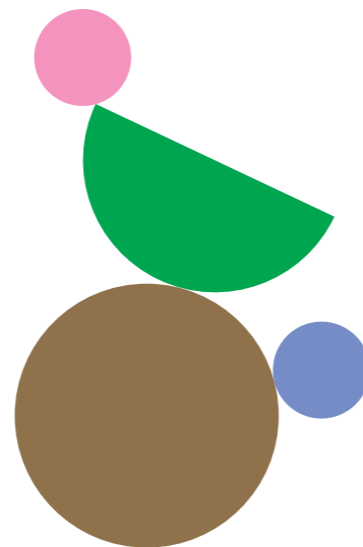
over age 10, the Orchestra ZOOM format is designed, where the pupils participate directly in the orchestra rehearsal. This allows them to meet individual musicians and become familiar with their instruments. Our overall program of educational events for children is completed by the children's club *Notička*, which tries to enrich children's aesthetic sensitivity in a creative way, extending the range of educational activities for children in their leisure time.

CONCERTS FOR CHILDREN AND PARENTS AT THE RUDOLFINUM D/E



PARTNERS

čeps



Paths of Music

As part of the series CONCERTS FOR CHILDREN AND PARENTS AT THE RUDOLFINUM, we have prepared four fun concerts for children and the whole family. We will show that through music and our imagination we can travel with open eyes to the remote corners of the world as well as the kaleidoscope of colorful distances of the universe. And if we listen carefully, the clear path of music will lead us to the heart of happiness. In the first concert we will hear pieces evoking natural phenomena, the second concert will take us to the countries of Europe and America, then on the wings of our imagination we will travel to other worlds

and finally we will see how music in its unmistakable way leads to joy and reconciliation in life.

PKF – Prague Philharmonia

playing, singing and dancing:

Magdalena Borová and Daniel Šváb

concept: Jiří Adámek Austerlitz

and Michaela Vyoralová

screenplay and direction:

Jiří Adámek Austerlitz

music program: Michaela Vyoralová

set design, costumes: Ivana Kanhäuserová

D/E

**D1/E1 TRAVELING THROUGH NATURE**

Sunday, 8 October 2023, 10:00 am and 12:00 noon
Dvořák Hall, Rudolfinum

D2/E2 TRAVELING THROUGH COUNTRIES OF THE WORLD

Sunday, 17 December 2023, 10:00 am and 12:00 noon
Dvořák Hall, Rudolfinum

D3/E3 TRAVELING TO OTHER WORLDS

Saturday, 27 January 2024, 10:00 am and 12:00 noon
Dvořák Hall, Rudolfinum

D4/E4 TRAVELING IN PURSUIT OF HAPPINESS

Sunday, 28 April 2024, 10:00 am and 12:00 noon
Dvořák Hall, Rudolfinum

Concerts are intended for children age 5 upwards and take place in the Dvořák Hall of the Rudolfinum starting at 10:00 am (D Series) and 12:00 noon (E Series). The performance lasts approximately 60 minutes.

Subscription price (adult) CZK 1 100 | 900 | 750

Subscription price (child up to 15) CZK 800 | 700 | 550

Individual ticket price (adult) CZK 400 | 300 | 250

Individual ticket price (child) CZK 300 | 250 | 200

D1/E1 TRAVELING THROUGH NATURE

Sunday, 8 October 2023, 10:00 am and 12:00 noon
Dvořák Hall, Rudolfinum

Music has always been associated with experiencing the beauty and mystery of nature. Composers have sung of sunrises and sunsets, rivers, seas, mountains and birdsong. How can music tell the story of all this? Very differently, as we can see by listening to five different storms by five different composers.

ANTONIO VIVALDI

The Four Seasons, Summer

LUDWIG VAN BEETHOVEN

Symphony No. 6 "Pastoral"

GIOACCHINO ROSSINI

Il barbiere di Siviglia

[The Barber of Seville], *Storm*

EDVARD GRIEG

Peer Gynt, suite No. 2, III. *Peer Gynt's Return (Storm at Sea)*

JOHANN STRAUSS

Unter Donner und Blitz

[Thunder and Lightning]

FRANZ SCHUBERT

Winterreise

[A Winter Journey]

JOSEF SUK

Serenade

BEDŘICH SMETANA

Vltava [The Moldau]

(from the cycle *My Country*)

FELIX MENDELSSOHN

Hebrides

D2/E2 TRAVELING THROUGH COUNTRIES OF THE WORLD

Sunday, 17 December 2023, 10:00 am and 12:00 noon
Dvořák Hall, Rudolfinum

This time our guides will take us to a variety of countries. In each country people think differently, have different ideas and write different music. We will visit Germany, Spain, Italy, Hungary, but also faraway America.

ZOLTÁN KODÁLY

Dances of Galánta

GEORGES BIZET

Suite from the opera *Carmen*

MANUEL DE FALLA

El sombrero de tres picos

[The Three-Cornered Hat]

PIETRO MASCAGNI

Intermezzo sinfonico from the opera *Cavalleria Rusticana*

GEORGE GERSHWIN

Prelude

ALEXANDR BORODIN

Polovtsian Dances



D3/E3 TRAVELING TO OTHER WORLDS

Saturday, 27 January 2024, 10:00 am and 12:00 noon
Dvořák Hall, Rudolfinum

Let us get our feet off the ground and up into space!
A journey to mysterious depths and adventures in the realm
of fantasy awaits us. Who knows, maybe we will hear the
angels sing? When we come back to our lives, we can draw
our strength from the beautiful memory of other worlds.

JOSEPH HAYDN

The Creation

PETER ILYICH

TCHAIKOVSKY

Prelude from the suite

Mozartiana

JOSEPH HAYDN

Symphony No. 101

"The Clock"

CAMILLE SAINT-SAËNS

Danse macabre

ANTONÍN DVOŘÁK

Symphony No. 9

"From the New World"

CHARLES IVES

The Unanswered Question

MILOSLAV KABELÁČ

The Mystery of Time

D4/E4 TRAVELING IN PURSUIT OF HAPPINESS

Sunday, 28 April 2024, 10:00 am and 12:00 noon
Dvořák Hall, Rudolfinum

Music can bring a sense of happiness, at least for some time,
while with composers it can last a lifetime. Let us look together
with different composers for what they need to write music and
be happy: wild dancing, silence and solitude, a train ride, or
perhaps interesting street sounds?

LUDWIG VAN BEETHOVEN

Symphony No. 3 "Eroica"

JOHANNES BRAHMS

Hungarian Dances

BÉLA BARTÓK

Romanian Dances

MODEST PETROVICH MUSSORGSKY

Pictures at an Exhibition

JOSEF SUK

Fairy Tale

BOHUSLAV MARTINŮ

The Chap-Book



CONCERTS FOR SCHOOLS



Městská část
Praha 8



PARTNEŘI

EDUCATIONAL CONCERTS FOR PUPILS AGE 5 TO 10 YEARS
The format of concerts for children and parents, transferred from the Rudolfinum to the Ládví House of Culture and adapted for young schoolchildren. The cozier atmosphere enables even stronger interaction for child audiences. As a bonus, children will get printed programs packed with songs, pictures to color, and quizzes.

OCTOBER 2023: TRAVELING THROUGH NATURE

Thursday, 5 October, and Friday, 6 October,
9:30 am and 11:00 am

DECEMBER 2023: TRAVELING THROUGH COUNTRIES OF THE WORLD

Thursday, 14 December, and Friday, 15 December,
9:30 am and 11:00 am

JANUARY 2024: TRAVELING TO OTHER WORLDS

Thursday, 25 January, and Friday, 26 January,
9:30 am and 11:00 am

APRIL 2024: TRAVELING IN PURSUIT OF HAPPINESS

Thursday, 25 April, and Friday, 26 April,
9:30 am and 11:00 am

VENUE: Kulturní dům Ládví / Ládví House of Culture,
Burešova 1661/2, Prague 8 (metro C, Ládví station)
Ticket price: CZK 100
Accompanying teacher(s) free of charge

RESERVATION AND INFORMATION

Jindřiška Pavlišová
T +420 601 141 887 • pavlisova@pkf.cz

Updated information on educational programs in the school year 2023/2024 can be found at www.pkf.cz/en/node/102

Maximum audience capacity: 250 persons
Program: see page 87



“ZOOM ORCHESTRA” EDUCATIONAL PROGRAM

FOR PUPILS AND STUDENTS AGE 10+ YEARS

The program is primarily intended for pupils of the second level of primary schools, students of 8-year grammar schools and high school students. The capacity for one session is 22—30 students. This unique project facilitates personal contact between students and members of the orchestra and actively involves children in the orchestra. After an introductory theoretical session, students meet the individual musicians and can ask questions or try their hand at playing an instrument. Finally, they take part in the rehearsal of the orchestra.

SESSION 1

4 and 5 September 2023

SESSION 2

10 September 2023

SESSION 3

1 December 2023

SESSION 4

12 January 2024

SESSION 5

13 and 14 June 2024

Duration of the event: 8:30 am—10:15 am

95

VENUE: Kulturní dům Ládví / Ládví House of Culture,
Burešova 1661/2, Prague 8 (metro C, Ládví station)

Ticket price: CZK 100

Accompanying teacher(s) free of charge

RESERVATION AND INFORMATION

Jindřiška Pavlišová

T +420 601 141 887 • pavlisova@pkf.cz

Updated information on educational programs in the school year 2023/2024 can be found at www.pkf.cz/en/node/184

CHILDREN'S CLUB NOTIČKA

FOR CHILDREN AGE 4 TO 14 YEARS

Notička is the oldest children's music club in Prague. It was founded by the PKF — Prague Philharmonia in 2007. It organizes 5 or 6 weekend sessions per calendar year. For the youngest children age 3 to 4 years, we have opened a Notička Prep, where parents can also get involved.

Carefully selected tutors interactively and very sensitively connect music with other branches of art, spiritual tendencies or knowledge. In this way, they appropriately develop children's creativity and introduce them to worlds they do not get to in everyday life. In 2023, the theme of the year will again be travel and learning about different cultures.

Membership price for 1 child: 2 500 CZK / year / person

Membership price for 2 siblings (10% discount):

2 250 CZK / year / person

Membership price for 3 or more siblings (20% discount):

2 000 CZK / year / person

Please register for the Notička group on the PKF Facebook (www.facebook.com/groups/klub.noticka) and follow the offers for Club members such as public rehearsals, advantageous family tickets and much more.

THE THEME FOR 2023

Traveling with Notička or The Journey to Discover the Beauties of Different Cultures II

Session 1 — 30 April 2023

Brazil or Let Us Dance All Day

Session 2 — 14 May 2023

Scotland or The Land of Ancient Secrets

Session 3 — 28 May 2023

India or The Land with a Thousand Years of Tradition

Session 4 — 17 September 2023

Spain or In the Whirl of Flamenco

Session 5 — 24 September 2023

The Czech Republic or Every Czech Is a Musician

VENUES:

Kulturní dům Ládví / Ládví House of Culture,

Burešova 1661/2, Prague 8

Antonín Dvořák Museum, Ke Karlovu 20, Prague 2

RESERVATION AND INFORMATION

Hana Zaalová

T +420 732 712 750 • zaalova@pkf.cz

Updated information on the Notička Club in the calendar year 2023 can be found at www.pkf.cz/en/noticka

ORCHESTRAL ACADEMY



Financováno
Evropskou unií
NextGenerationEU



CZECH
RECOVERY
PLAN



MINISTERSTVO
KULTURY



STADLER-TRIER
MUSIC FOUNDATION

THE PROJECT IS CARRIED OUT WITH THE FINANCIAL SUPPORT OF THE MINISTRY OF CULTURE, THE NATIONAL RECOVERY PLAN AND THE EUROPEAN UNION.

PARTNER OF THE ORCHESTRAL ACADEMY

2023 will be the 16th year of the popular **PKF—Prague Philharmonia Orchestral Academy**, the first project of this type in the Czech Republic. Each year, the orchestra welcomes 15 young, talented musicians to its family. PKF members help them to gain practice in high quality orchestral playing, and enthusiastically they teach them the basic philosophy of the PKF's style of performance: precision, a sense of harmony and attention to detail, artistic humility, friendship and respect.

From the very beginning, the members of the Orchestral Academy have been involved in the PKF's artistic projects. They gain experience not only in orchestral concerts, but also in recording projects and the Chamber Music Series (K) as well as the Contemporary Music Series (S). Many of them have also traveled with the PKF to Europe, Asia and North America as part of its international engagements.

The first year of the Orchestral Academy met with great interest, and a year later, in 2009, several of its members took part in the unique YouTube Symphony Orchestra project. Two of them — Jakub Fišer and Ondřej Martinovský — performed under the direction of conductor M. Tilson Thomas together with 90 selected musicians from all over the world at Carnegie Hall in New York.

99

The students of the PKF—Prague Philharmonia Orchestral Academy are a new influx of energy for the orchestra and a guarantee that the PKF will remain a symbol of youth and enthusiasm for music.

ELIŠKA BOŠKOVÁ (FLUTE) MEMBER OF THE ORCHESTRAL ACADEMY

"It's fantastic when you can play a part you practice like crazy in your room at home in a real orchestra! What's even cooler is that in our flute group, the guys let us play first and second flute and also piccolo, so in my year at the academy I've learned to be incredibly flexible because I've had to play something a little different every time and I've been able to try out playing all these positions. I think that was the biggest benefit for me. And confidence. To play first flute or an important piccolo solo in a super orchestra, that's a huge confidence-booster that the PKF gave me, and I'm very grateful for it," says Eliška, adding, *"Playing in an orchestra is very different from playing solo. You have to listen much more, you have to adapt to the colors of the other instruments, intonation, you can't set your own tempo... "*

COORDINATOR OF THE PKF—PRAGUE PHILHARMONIA ORCHESTRAL ACADEMY

Eva Sopková
T +420 222 200 421 • sopkova@pkf.cz

PKF FRIENDS

FRIENDS OF THE
PKF — PRAGUE PHILHARMONIA

WHO ARE WE?

Friends of the PKF — Prague Philharmonia who have decided to support this exceptional musical ensemble with a financial donation. Join us and follow the orchestra's projects from their beginnings until the moment of their realization.

Become a PKF — Prague Philharmonia benefactor and support the mission of this extraordinary musical ensemble.

CONTACT

Martina Sermain
T +420 734 579 333 • sermain@pkf.cz
www.pkf.cz/en/pkf-friends

THE DONATION

can be made simply by transferring to the account No. 123-1299860287/0100 or in cash at the office of the PKF — Prague Philharmonia, Burešova 1661/2, Prague 8, Ládví House of Culture (by prior arrangement).

EMMANUEL VILLAUME

MUSIC DIRECTOR AND CHIEF CONDUCTOR

"We are a small orchestra distinguished by its virtuosity, an absence of any music routine, and the desire to continually find new directions. We open the doors to a world of top-class artists in a way which does not intimidate but instead energizes. We represent the best in Czech performing art and abroad we are respected, sought-after exponents of Czech musical traditions. I have worked with music ensembles across the globe but nowhere else will you find the kind of commitment and devotion to music as from the players of the PKF."

WHAT IS YOUR GREATEST MUSICAL EXPERIENCE WITH PKF — PRAGUE PHILHARMONIA AND WHAT MADE IT SPECIAL FOR YOU?

LADISLAV CHVÁTAL
BENEFACTOR

"A unique experience for me was the Inauguration Concert of the French Presidency of the Council of the European Union as part of the PKF — Prague Philharmonia's Orchestral Series. Maurice Ravel's Bolero was performed in the Smetana Hall of the Municipal House. The individual wind instruments, among which the melody, continually building up until an exultant conclusion, is passed, confirmed that the players — soloists — in the orchestra are truly outstanding. And who can better understand French music than Emmanuel Villaume, the Chief Conductor of the PKF — Prague Philharmonia?"

FRANTIŠEK DOSTÁLEK
BENEFACTOR

"I really enjoyed the colorful opening concert of the PKF on 7 September 2022 featuring works by Wolfgang Amadeus Mozart and beautiful French music. Maurice Ravel's Shéhérazade song cycle was wonderfully performed by

soprano Ailyn Pérez, whom I had the opportunity to speak with after the concert. We also talked about her future, after which Ailyn softly sang to me a considerable part of the famous Moon Aria. I couldn't have asked for a better ending to the evening. The opportunity to interact with musicians and performers is what I really appreciate about the PKF concerts."

MILOSLAV VYHNAL
BENEFACTOR

"One of my greatest experiences was the French evening that took place at the Municipal House on 2 February 2022. The evening program, consisting of works by George Bizet, Claude Debussy and Bohuslav Martinů, culminated in one of the most popular pieces of classical music ever, Maurice Ravel's Bolero. The gradation of the piece and the dedication of the musicians, who delivered individual solos, showed why the PKF — Prague Philharmonia is one of the very best orchestras."

KARLA LAŽANSKÁ
BENEFACTOR

"Recently, my greatest experience has been the chamber music evenings that take place as part of the PKF — Prague Philharmonia's Chamber Music Series in the wonderful surroundings of the Baroque Refectory of the Professed House of the Faculty of Mathematics and Physics of Charles University. The venue

itself gives the concerts a wonderful festive atmosphere. The Chamber Music Series is prepared with care, with love for music and with the aim of making the audience happy. Each concert is a pleasant surprise for visitors, and Ms. Sermain's commentaries make each work performed clear to those not in the know. The 2022/2023 series this year made me enjoy all the concerts, each creating a great atmosphere. In particular, I was pleasantly surprised by the K4 concert on 5 December 2022. Never in my life have I heard a piece played on two double basses accompanied by a piano. It was a new and unforgettable experience. The Chamber Music Series — these are special music evenings to remember. I thank you for them from the bottom of my heart!"

HANA PAVLIŠTOVÁ
DONOR

"I look for summer music experiences at festivals in Český Krumlov and Litomyšl. If I encounter my PKF on my travels, I enjoy it all the more! Our PKF — Prague Philharmonia is also a popular orchestra to accompany world stars. It is not surprising that last year at the Litomyšl Festival it was the right partner for baritone Erwin Schrott, who has been gracing the stages of opera houses around the world for many years. This concert has been one of many unforgettable ones for me. Erwin Schrott completely won us over, we even sang with him the

chorus of Osvaldo Farrés's song Quizás, Quizás..., which resounded in the audience's rendition throughout the castle courtyard. It was an amazing concert, which was a great success thanks to the great accompaniment of the PKF."

RADOMÍRA SEDLÁKOVÁ
FAN

"For me, every concert is special. I don't remember having had anything less than the greatest experiences with the PKF. However, if we are talking about recent ones, Symphonic Variations by Viktor Kalabis, performed by the PKF in the Rudolfinum on 15 January 2023 under the baton of its Chief Conductor Emmanuel Villaume, was a real surprise for me. I must admit that I was a bit afraid of it. Kalabis has never been one of the composers I seek out — but in the end I was intrigued and I liked him a lot. And now I can ponder if I have finally matured into his music, or if it is thanks to the way the PKF has conceived it. I guess both came together. Either way, I am very grateful for it... and if I were to recall the truly greatest experience that still resonates with me after all these years, it is Beethoven's Fifth Symphony conducted by Jiří Bělohlávek. That was literally otherworldly."



BECOME A VOLUNTEER OF THE PKF—PRAGUE PHILHARMONIA

WHAT CAN YOU DO TO HELP?

→ Help us to promote the PKF—Prague Philharmonia. We are looking for volunteers to help us build and maintain a distribution network for our promotional materials. For example, you can take them to your workplace.

→ Recommend the PKF—Prague Philharmonia concerts to your friends or colleagues at work.

→ Would you be interested in using your skills to help in the office for a few hours a week?

→ Share our posts on your social profiles.

→ Help to create and maintain the new PKF—Prague Philharmonia website.

→ Join the team of people who are building the new image of the PKF—Prague Philharmonia!

→ Come and help us directly at a concert, be it in the Rudolfinum, which hosts the Orchestral Series A; the Professed House, where we hold the Chamber Music Series K; or at the Contemporary Music Series S in the Studio of the Švanda Theater.

→ Do you live or work in any unusual, interesting spaces? Become a host of our club meetings, talks, chamber concerts or private meetings with musicians once a year.

**YOU CAN HELP IN OTHER WAYS THAN WITH MONEY!
THANK YOU!**

CONTACT

Martina Sermain
T +420 734 579 333 • sermain@pkf.cz
www.pkf.cz/en/pkf-volunteer

TICKETS AND SUBSCRIPTION SALE

All information regarding purchase of tickets and subscription prices, KOMBI ABO subscription, individual concert prices, and group tickets are available on www.pkf.cz/en

**START OF SUBSCRIPTIONS
2023/2024 SALE**

Thursday 13 April 2023 at 10:00 am

**START OF INDIVIDUAL CONCERT TICKETS
AND GIFT VOUCHERS FOR 2023/2024
SEASON SALE**

Thursday 18 May 2023 at 10:00 am

**SUBSCRIPTION RENEWAL,
RESERVATION AND SALE**

— Online at www.pkf.cz/en
— By phone +420 461 049 232 or by e-mail on info@enigoo.cz (daily excluding holidays from 9:00 am to 10:00 pm)
— In person at the PKF — Prague Philharmonia box office (cash or card)
— 2023/2024 season subscriptions are

automatically reserved for the next season until 17 May 2023. Unclaimed subscriptions will be available for sale from 18 May 2023.

INDIVIDUAL TICKET SALE

— Online at www.pkf.cz/en
— By phone +420 461 049 232 or by e-mail on info@enigoo.cz (daily excluding holidays from 9:00 am to 10:00 pm)
— Remaining unsold tickets are for sale always an hour before the start of the concert at the venues box office

**FOR MORE INFORMATION
PLEASE CONTACT US:**

During working days from 9:30 am until 4 pm
T +420 224 267 644 • e-mail: pkf@pkf.cz
www.pkf.cz/en

BOX OFFICE

PKF — PRAGUE PHILHARMONIA
Kulturní dům Ládví, Burešova 1661/2, Prague 8
Underground line C, stop Ládví (10 minutes from the city center, exit marked KD Ládví)

Tram 10 | Bus 152, 166, 177, 348
T +420 224 267 644 • tickets@pkf.cz

OPENING HOURS OF THE BOX OFFICE

Mon 9:30 am—5:00 pm
Wed 9:30 am—5:00 pm
Thu 9:30 am—5:00 pm

SUMMER BREAK:

10 July—18 August 2023
(online sale uninterrupted)

**PROGRAM INFORMATION, CUSTOMER
SUPPORT AND GROUP ORDERS (MORE
THAN 10 PERSONS)**

Mon—Fri 9:30 am—4:00 pm
(excluding holidays)
T +420 224 267 644

SUBSCRIPTION TICKETS

Subscription tickets give a discount of up to 45% compared to the price of individual tickets and bring with them a further 15% discount for purchasing extra tickets for individual concerts in the A, K, S, and D/E series. Special subscriptions for senior citizens 65+ for series A, K and S (not available online).

**ISIC & ITIC SUBSCRIPTION
ISIC & ITIC DISCOUNT**

ISIC/ITIC card holders can buy a special ISIC/ITIC subscription for the **S series** at CZK 590 / CZK 1 200 and individual tickets at CZK 100 / CZK 200 for concerts in the A series for seats from category III. The discount can be claimed online with a valid ISIC/ITIC card. Each ISIC/ITIC card provides a discount for one ticket of the chosen concert and one subscription ticket in the Contemporary Music Series S.

**DISCOUNT ON ORCHESTRAL
SUBSCRIPTION SERIES A**

For subscribers to Series D/E (a parent and minimum of one child) we offer a 10% discount on the purchase of subscription Series A.

STUDENT DISCOUNT

For the **K** and **S** series, tickets at CZK 100 are available for students under the age of 26 (holders of ISIC cards, student or pupil identity cards). Discount can be applied online, by phone or in person or by e-mail.

ZTP AND ZTP-P DISCOUNT

Holders of ZTP (1 person) and ZTP-P (1 person with 1 assistant) get 50% discount for all concerts in the season.

CHILDREN'S DISCOUNT

Children under the age of 15 are entitled to CZK 100 tickets for all ticket categories to the **A, K** and **S** concert series. For the D/E children's series, a child subscription ticket and child tickets are available for a reduced price.

GIFT DISCOUNT

If you wish to print a ticket as a gift with no price stated, please choose "**Gift discount**" during the booking.

GENERAL INFORMATION

- Discounts cannot be combined.
- Purchased tickets cannot be exchanged or returned. Money will be refunded only in the case of concert cancellation if no alternative is offered.
- No replacement can be offered for lost tickets with the exception of subscriptions.
- The organizer holds no responsibility for tickets bought outside the official selling points of the PKF — Prague Philharmonia.
- The organizer reserves the right to check the certificates used to purchase the discounted tickets when they are presented at the hall entrance.
- **In the interest of undisturbed concert performance late arrivals automatically lose their right to be seated at their chosen seat and will be offered available seats but only during the interval or applause. Thank you for your cooperation.**

- The organizer reserves the right to change the program and substitute performers if necessary, and this does not constitute the right to a ticket refund. All changes are published at www.pkf.cz/en.
- Photography, audio or video recordings and the use of mobile phones or other electronic devices during the concerts are not allowed.
- Detailed information on PKF conditions of sale is available at www.pkf.cz/en.

PURCHASING IS EASY ONLINE!

- You can buy online subscriptions, individual tickets and vouchers. However, the purchase of subscriptions, KOMBI ABO or individual tickets online can only be conducted by phone at +420 461 049 232, or by e-mail info@enigoo.cz.
- The subscription sales are available under **Concerts and Tickets → Subscriptions section 2023—2024**. You will find a link to purchase individual tickets in the detail of each concert or in the **Concerts section and tickets → Calendar and ticket sales**
- Click on **buy button ticket** or **buy Subscription button**. Depending on the venue, some tickets will be numbered, while some halls will have free seating.
- With numbered tickets you will be shown the seat and the price. When seats are not numbered, you will have to choose between standard or donor's ticket, choose the price and number of tickets required. You can then get to purchasing another concert via the **Select other events**, where you will repeat the whole process.

- If you have all the required tickets and set discounts in the basket, confirm your agreement with the Terms and Conditions, choose the method of ticket delivery and the method of payment. The system is automatically set to eTicket and payment by card online. Click the **Pay Online button**.
- After that you will be transferred to payment or to finishing your order. You will receive an order confirmation at the specified e-mail address, as well as the validity date reservation and a copy of the invoice if you have chosen the method of payment by bank transfer or cash.
- NOTIFICATION**
- eTickets can be bought no later than 5 minutes before the start of the concert. Online payment by card is required. After that, purchase is possible only at the venue's box office.
- Ticket with payment by bank transfer can be purchased no later than 5 days before the date of the concert.

CONCERT VENUES

- RUDOLFINUM
Alšovo nábřeží 12, Prague 1
- LOBKOWICZKÝ PALÁC /
LOBKOWICZ PALACE
Prague Castle, Jiřská 3, Prague 1
- PROFESNÍ DŮM MFF UK / PROFESSED
HOUSE, FACULTY OF MATHEMATICS AND
PHYSICS OF CHARLES UNIVERSITY*
Malostranské nám. 2/25, Prague 1
- STUDIO OF THE ŠVANDA THEATER
Štefánikova 57, Praha 5
- KULTURNÍ DŮM LÁDVÍ/LÁDVÍ HOUSE
OF CULTURE*

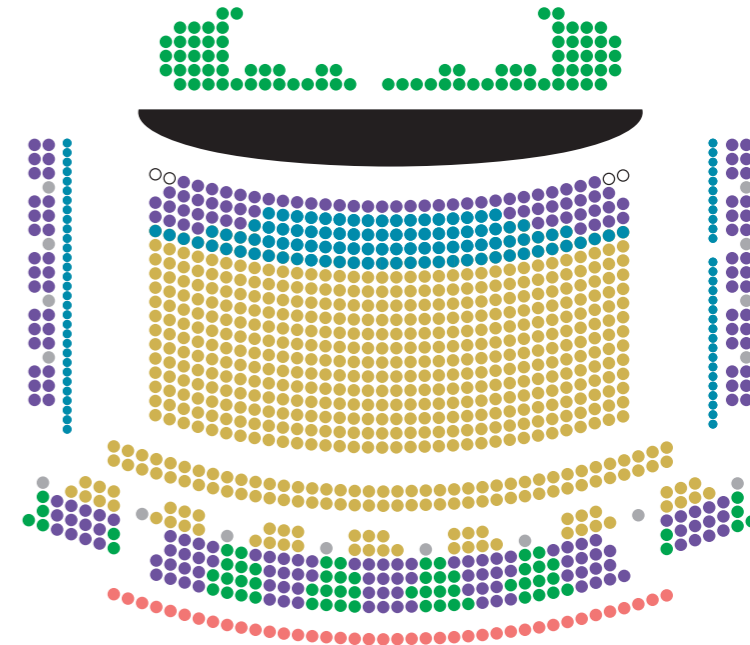
- Burešova 1661/2, Prague 8
- * not numbered, free seating

SUBSCRIPTION CATEGORY ↓	CATEGORY →	I.	II.	III.	IV.
A ORCHESTRAL SERIES (9 concerts)	Full price	5 500	4 800	4 100	3 000
	Senior citizens 65+	5 000	4 300	3 800	2 700
L PKF—LOBKOWICZ SERIES (4 concerts)	Donor's price	28 000			
K CHAMBER MUSIC SERIES (10 concerts)	Full price	3 000			
	Senior citizens 65+	2 300			
S CONTEMPORARY MUSIC SERIES (6 concerts)	Full price	1 500			
	Senior citizens 65+	1 000			
D/E CONCERTS FOR CHILDREN (4 concerts)	Adult	1 100	900	750	
	Child	800	700	550	

RUDOLFINUM, DVOŘÁK HALL
www.rudolfinum.cz/en

ORCHESTRAL SERIES A

- Category 1
- Category 2
- Category 3
- Category 4 (seats with a partially restricted view and organ gallery above the stage)
- Standing





The City of Prague has supported the PKF—Prague Philharmonia in 2023 with the sum of CZK 11 million.

GENERAL PARTNER

PRINCIPAL PARTNER

GENERAL MEDIA PARTNER

PRINCIPAL MEDIA PARTNER

PATRON

PROVISION OF LEGAL SERVICES

PARTNERS



HOSPODÁŘSKÉ NOVINY



A

PARTNER
OF THE ORCHESTRAL SERIES

THE CONCERTS A1, A3 AND A4 ARE CARRIED OUT WITH THE FINANCIAL SUPPORT OF THE
MINISTRY OF CULTURE, THE NATIONAL RECOVERY PLAN AND THE EUROPEAN UNION.

AD-VENTURES INVEST
ALONGSIDE NEXT GENERATION

**L**

PATRONS OF THE PKF — LOBKOWICZ SERIES 2023

JULIUS PRÜGER
MILAN POPILKA

IN COOPERATION WITH MEDIA PARTNER



euro

DESIGN PARTNER

**K**

SUPPORT OF THE CHAMBER MUSIC SERIES

Becker
Becker & Poliakoff

IN COOPERATION WITH



Special thanks to Ing. Ondřej Žižka

PARTNER

EUR:OFFICE
PRAHA-BRUSEL A.S.

S

WITH THE SUPPORT OF



MUSIC SERIES S SUPPORTERS:

LIBOR WINKLER AND VERONIKA WINKLEROVÁ

D/E

WITH THE SUPPORT OF

čeps

PARTNERS



Městská část
Praha 8

MEDIA PARTNER



ARTISTIC PARTNERS

HAMU
HUDEBNÍ A TANEČNÍ FAKULTA
AKADEMIE MŮZICKÝCH
UMĚNÍ V PRAZE

Pražský
filharmonický
sbor

Nachtigall Artists

MEDIA PARTNERS



THE PKF — PRAGUE PHILHARMONIA IS A MEMBER OF THE FRENCH-CZECH CHAMBER OF COMMERCE

OFFICIAL PERSONAL TRANSPORT PROVIDER

IN COOPERATION WITH

PKF — PRAGUE PHILHARMONIA BOARD MEMBERS

ROBERT SCHÖNFELD

Founder

PROF. JIŘÍ BĚLOHLÁVEK (1946—2017)

Honorary Founder

BOARD OF DIRECTORS

MARTIN KLIMPL

Chairman

ILJA ŠMÍD

JANA ZBORTKOVÁ

DANA BÉROVÁ

LIBOR KUDLÁČEK

MARTIN VRECION

SUPERVISORY BOARD

ROBERT SCHÖNFELD

Chairman

JEAN-FRANÇOIS EHRlich

LIBOR WINKLER

PKF FOUNDATION BOARD MEMBERS

BOARD OF DIRECTORS

ONDŘEJ ŽIŽKA

Chairman

JAN FIŠER

MIROSLAV STŘELÁK

SUPERVISORY BOARD

PETR KŠÁDA

MARTIN TŮMA

MICHAL VÍŠEK

ORCHESTRAL BOARD OF THE
PKF — PRAGUE PHILHARMONIA

MICHAL SEDLÁČEK

MARTA HAJŠMANOVÁ

JINDŘICH PAVLIŠ

JIŘÍ ŠEVČÍK

STANISLAV SVOBODA

ROMANA ŠPAČKOVÁ

SVATOPLUK ZAAL

ARTISTIC BOARD OF THE
PKF — PRAGUE PHILHARMONIA

MICHAL SEDLÁČEK

JINDŘICH PAVLIŠ

LUKÁŠ POSPÍŠIL

ROMANA ŠPAČKOVÁ



MANAGEMENT
PKF — PRAGUE PHILHARMONIA

KATEŘINA KALISTOVÁ

Director

DANA SYROVÁ

Director of PKF — LOBKOWICZ
Subscription

GABRIELA HÜBLOVÁ

Office Manager

SARAH GRÁFOVÁ

Orchestra Manager

KAMILA UHERKOVÁ

Production

HANA DOHNÁLKOVÁ

Head of the Music Archive • Head of
Programming of the Contemporary
Music Series S

EVA SOPKOVÁ

Music Archive • Secretary
of the Orchestral Academy

JINDŘIŠKA PAVLIŠOVÁ

PR & Marketing

MARTINA SERMAIN

Head of Programming of the Chamber
Music Series (K) • Secretary of the
PKF Foundation • PKF Friends Club

VLADIMÍRA BRYCHOVÁ

Production

NAĎA STRAKOVÁ

Fundraising

FILIP ROŽÁNEK

Webmaster

SVATOPLUK ZAAL

Orchestra Inspector •

Head of the Orchestral Academy (OA)

ROBERT SÍTEK

Stage Manager

HANA ZAALOVÁ

"Notička" Children's Club Coordinator

ORGANIZER

PKF — Prague Philharmonia, o.p.s.

Kulturní dům Ládvi, Burešova 1661/2, 182 00 Praha 8

T +420 224 267 644 • info@pkf.cz • www.pkf.cz/en

GRAPHIC DESIGN AND DTP © Kateřina Šuterová

(katkasuterovaaa@gmail.com, suterova.com)

PHOTOS © Ivan Malý © Milan Mošna © Petr Chodura © Petra Hajská

© Václav Hodina © Hana Görlichová © Marco Borggreve © Michael Tomeš

TYPE OE Display © Kristína Jandová (kristinajandova.com)

TRANSLATION © Vladimíra Šefranka Žáková

CLOSING DATE 17 March 2023, 1st edition. Not for sale.

Programs and performers subject to change.

PKF— Prague Philharmonia, o.p.s.
Kulturní dům Ládvi, Burešova 1661/2, 182 00 Praha 8
T +420 224 267 644 • info@pkf.cz • www.pkf.cz

Facebook: @praguephil
Instagram: @praguephil
Twitter: @praguephil
Youtube: PraguePhilharmonia



SEASON CALENDAR 2023•2024

2023

APRIL

L1	TUE 25. 4. 2023, 19.00 Lobkowicz Palace	MOZART. MOUSSA Andrew von Oeyen — <i>piano, conductor</i>	Donor's ticket: 10 000
-----------	--	---	------------------------

JUNE

L2	WED 14. 6. 2023, 19.00 Lobkowicz Palace	RAVEL. DEBUSSY. BEETHOVEN Emmanuel Villaume — <i>conductor</i> Emmanuel Ceysson — <i>harp</i>	Donor's ticket: 10 000
-----------	--	---	------------------------

SEPTEMBER

A1	WED 6. 9. 2023, 19.30 Rudolfinum, Dvořák Hall	SUK. DVOŘÁK Emmanuel Villaume — <i>conductor</i> Jan Vogler — <i>cello</i>	1 300 900 700 500 (SL/E) 200 (ST)
-----------	--	--	---

I3	MON 11. 9. 2023, 19.00 Lobkowicz Palace	ROTA. VILLA-LOBOS. PIAZZOLLA Alexandra Tirsu — <i>violin</i> Michal Sedláček — <i>artistic direction</i>	Donor's ticket: 10 000
-----------	--	--	------------------------

K1	MON 25. 9. 2023, 19.30 Professed House	DVOŘÁK. HAAS. JANÁČEK BELFIATO QUINTET Oto Reiprich — <i>flute</i> Jan Souček — <i>oboe</i> Jiří Javůrek — <i>clarinet</i> Jan Hudeček — <i>bassoon</i> Kateřina Javůrková — <i>French horn</i> Guest: Petr Nekoranec — <i>tenor</i>	500 400 (seniors 65+) 100 (students and children up to 15)
-----------	---	---	---

OCTOBER

A2	SUN 1. 10. 2023, 19.30 Rudolfinum, Dvořák Hall	SCHUBERT. MOZART. DVOŘÁK. VOŘÍŠEK Christoph-Mathias Mueller — <i>conductor</i>	900 760 580 300 (SL/E) 150 (ST)
-----------	---	--	---

D1/E1	SUN 8. 10. 2023, 10.00, 12.00 Rudolfinum, Dvořák Hall	TRAVELING THROUGH NATURE Members of the PKF — Prague Philharmonia and their guests	400 300 250 (adult) 300 250 200 (child)
--------------	--	--	--

K2	MON 16. 10. 2023, 19.30 Professed House	ZELENKA. REICHENAUER TRIO BDF Vladislav Borovka — <i>oboe</i> Tomáš Františ — <i>bassoon</i> Olga Dlabáčová — <i>harp</i> Guests: Jan Fišer — <i>violin</i> Václav Petr — <i>cello</i> Barbora Trnčíková — <i>oboe</i>	450 350 (seniors 65+) 100 (students and children up to 15)
-----------	--	---	---

S1	TUE 24. 10. 2023, 19.00 Studio of the Švanda Theater	MICHAL RATAJ (1975) — BETWEEN GENRES Members of the PKF — Prague Philharmonia and their guests	400 300 (seniors 65+) 100 (students and children up to 15)
-----------	---	--	---

L4	TUE 31. 10. 2023, 19.00 Lobkowicz Palace	MOZART. HÄNDEL Matthew Newlin — <i>tenor</i> Michal Sedláček — <i>artistic direction</i>	Donor's ticket: 10 000
-----------	---	--	------------------------

NOVEMBER

A3	SUN 12. 11. 2023, 19.30 Rudolfinum, Dvořák Hall	RODIN. SZYMANOWSKI. BEETHOVEN Mykola Diadiura — <i>conductor</i> Vadim Gluzman — <i>violin</i>	1 300 900 700 500 (SL/E) 200 (ST)
-----------	--	--	---

K3	MON 27. 11. 2023, 19.30 Professed House	KUBELÍK. SUK. VEIT SEDLÁČEK QUARTET Michal Sedláček — <i>1st violin (concert master)</i> Jan Maceček — <i>2nd violin</i> Tomáš Krejbič — <i>viola</i> Matěj Štěpánek — <i>cello</i> Guest: Jakub Fišer — <i>viola</i>	450 350 (seniors 65+) 100 (students and children up to 15)
-----------	--	---	---

DECEMBER

A4	SUN 3. 12. 2023 19.30 Rudolfinum, Dvořák Hall	KREJČÍ. HUMMEL. VEIT. MENDELSSOHN-BARTHOLDY Emmanuel Villaume — <i>conductor</i> Lucienne Renaudin Vary — <i>trumpet</i>	1 300 900 700 500 (SL/E) 200 (ST)
-----------	--	--	---

S2	TUE 12. 12. 2023, 19.00 Studio of the Švanda Theater	HANUŠ BARTOŇ (1960) and MICHAL NEJTEK (1977) — MUSIC AFTER 2000 Members of the PKF — Prague Philharmonia and their guests	400 300 (seniors 65+) 100 (students and children up to 15)
-----------	---	---	---

D2/E2	SUN 17. 12. 2023, 10.00, 12.00 Rudolfinum, Dvořák Hall	TRAVELING THROUGH THE COUNTRIES OF THE WORLD Members of the PKF — Prague Philharmonia and their guests	400 300 250 (adult) 300 250 200 (child)
--------------	---	--	--

K4	MON 18. 12. 2023, 19.30 Professed House	DVOŘÁK. FOERSTER. JANÁČEK Lucie Hilscherová — <i>mezzo soprano</i> Jindřich Pavliš — <i>clarinet</i> Ondřej Martinovský — <i>viola</i> Miroslav Sekera — <i>piano</i>	450 350 (seniors 65+) 100 (students and children up to 15)
-----------	--	--	---

2024

JANUARY

A5	SUN 14. 1. 2024, 19.30 Rudolfinum, Dvořák Hall	BEETHOVEN. PICHL. BERLIOZ. CHERUBINI Emmanuel Villaume — <i>conductor</i> Prague Philharmonic Choir	900 760 580 300 (SL/E) 150 (ST)
-----------	---	---	---

D3/E3	SAT 27. 1. 2024, 10.00, 12.00 Rudolfinum, Dvořák Hall	TRAVELING TO OTHER WORLDS Members of the PKF — Prague Philharmonia and their guests	400 300 250 (adult) 300 250 200 (child)
--------------	--	---	--

K5	MON 29. 1. 2024, 19.30 Professed House	REICHA. JEŽEK. JANÁČEK PRAGUE PHILHARMONIA WIND QUINTET Jiří Ševčík — <i>flute</i> Vladislav Borovka — <i>oboe</i> Jan Brabec — <i>clarinet</i> Václav Fürbach — <i>bassoon</i> Mikuláš Koska — <i>French horn</i> Guest: Jindřich Pavliš — <i>bass clarinet</i>	450 350 (seniors 65+) 100 (students and children up to 15)
-----------	---	--	---

FEBRUARY

S3	TUE 13. 2. 2024, 19.00 Studio of the Švanda Theater	JAROSLAV PELIKÁN (1970) — BETWEEN FLUTE, COMPOSITION AND OPERA Members of the PKF — Prague Philharmonia and their guests	400 300 (seniors 65+) 100 (students and children up to 15)
-----------	--	--	---

K6	MON 26. 2. 2024, 19.30 Professed House	JAN NOVÁK Clara Nováková — <i>flute</i> Lukáš Pospíšil — <i>cello (principal cellist)</i> Tomáš Františ — <i>bassoon</i> Dora Novak-Wilmington — <i>piano</i> Filip Martinka — <i>piano</i>	450 350 (seniors 65+) 100 (students and children up to 15)
-----------	---	--	---

MARCH

A6	MON 4. 3. 2024, 19.30 Rudolfinum, Dvořák Hall	DVOŘÁK Eugene Tzigane — <i>conductor</i> Midori — <i>violin</i>	1 300 900 700 500 (SL/E) 200 (ST)
-----------	--	---	---

S4	THUR 14. 3. 2024, 19.00 Studio of the Švanda Theater	SLOVAK FEMALE COMPOSERS: Jana Kmitová (1976) and Lenka Novosedlíková (1989) Members of the PKF — Prague Philharmonia and their guests	400 300 (seniors 65+) 100 (students and children up to 15)
-----------	---	---	---

K7	MON 25. 3. 2024, 19.30 Professed House	SUK. MARTINŮ. DVOŘÁK TRIO INCENDIO Filip Zaykov — <i>violin</i> Vilém Petras — <i>cello</i> Karolína Františová — <i>piano</i> Guest: Stanislav Svoboda — <i>viola</i>	450 350 (seniors 65+) 100 (students and children up to 15)
-----------	---	---	---

APRIL

A7	MON 8. 4. 2024, 19.30 Rudolfinum, Dvořák Hall	SMETANA. GLASS. DVOŘÁK Emmanuel Villaume — <i>conductor</i> Anne Akiko Meyers — <i>violin</i>	1 300 900 700 500 (SL/E) 200 (ST)
-----------	--	---	---

K8	MON 22. 4. 2024, 19.30 Professed House	VEJVANOVSKÝ. HORKÁ. FILAS CZECH BRASS Marek Zvolánek — <i>trumpet</i> Stanislav Masaryk and Martin Pavluš — <i>trumpets</i> Lukáš Moška and Stanislav Penk — <i>trombones</i> Pavel Debeš — <i>bass trombone</i> Karel Malimánek — <i>tuba</i>	450 350 (seniors 65+) 100 (students and children up to 15)
-----------	---	---	---

S5	TUE 23. 4. 2024, 19.00 Studio of the Švanda Theater	MARTIN HYBLER (1977) — PORTRAIT Members of the PKF — Prague Philharmonia and their guests	400 300 (seniors 65+) 100 (students and children up to 15)
-----------	--	---	---

D4/E4	SUN 28. 4. 2024, 10.00, 12.00 Rudolfinum, Dvořák Hall	TRAVELING IN PURSUIT OF HAPPINESS Members of the PKF — Prague Philharmonia and their guests	400 300 250 (adult) 300 250 200 (child)
--------------	--	---	--

MAY

A8	SAT 11. 5. 2024, 19.30 Rudolfinum, Dvořák Hall	JANÁČEK. MARTIN. MILHAUD. SCHUMANN Oscar Jockel — <i>conductor</i> Valentine Michaud — <i>saxophone</i>	1 300 900 700 500 (SL/E) 200 (ST)
-----------	---	---	---

K9	MON 27. 5. 2024, 19.30 Professed House	SMETANA. JANÁČEK. BRAHMS BENNEWITZ QUARTET Jakub Fišer — <i>1st violin</i> Štěpán Ježek — <i>2nd violin</i> Jiří Pinkas — <i>viola</i> Štěpán Doležal — <i>cello</i> Guests: Lukáš Pospíšil — <i>cello (section principal)</i> Karel Untermüller — <i>viola</i>	500 400 (seniors 65+) 100 (students and children up to 15)
-----------	---	---	---

JUNE

K10	MON 10. 6. 2024, 19.30 Professed House	NOVÁK. BEETHOVEN. SMETANA SMETANA TRIO Jan Talich — <i>violin</i> Jan Páleníček — <i>cello</i> Jitka Čechová — <i>piano</i> Guest: Jan Brabec — <i>clarinet</i>	500 400 (seniors 65+) 100 (students and children up to 15)
------------	---	--	---

A9	SAT 15. 6. 2024, 19.30 Rudolfinum, Dvořák Hall	MARTINŮ. LISZT. KAPRÁLOVÁ. BEETHOVEN Emmanuel Villaume — <i>conductor</i> George Li — <i>piano</i>	1 300 900 700 500 (SL/E) 200 (ST)
-----------	---	--	---

S6	TUE 18. 6. 2024, 19.00 Studio of the Švanda Theater	TWENTY YEARS OF THE S SERIES Petr Wajsar — Jan Kučera — Miloš Orson Štědroň — Martin Hybler Members of the PKF — Prague Philharmonia and their guests	400 300 (seniors 65+) 100 (students and children up to 15)
-----------	--	--	---

PKF Friends

Friends of the PKF—Prague Philharmonia

BENEFITS

	Benefactor CZK 100 000 and more *	Patron CZK 50 000—99 999	Donor CZK 20 000—49 999	Supporter CZK 10 000—19 999	Fan CZK 2 000—9 999
Complimentary PKF—Prague Philharmonia concert and opera tickets abroad and concierge services The cost in connection with the journey and stay is paid by the client	1 event (total 2 tickets)	1 event (total 2 tickets)			
Complimentary tickets for Orchestral Series (A)	2 season or 10 individual tickets	1 season or 6 individual tickets	4 individual tickets	2 individual tickets	
Complimentary tickets for Chamber Series (K) concerts	2 complimentary tickets	1 complimentary tickets			
Tickets for PKF—Prague Philharmonia concerts with other promoters in the Czech Republic	4 complimentary tickets	2 complimentary tickets			
Invitation to social events in connection with PKF—Prague Philharmonia	all in season	2x in season (opening, closing)	1x in season (opening)		
PKF—Prague Philharmonia CD recordings released in the 2023—2024 season	all new recordings	1 new recording of your choice	1 new recording of your choice	1 new recording of your choice	1 new recording of your choice
Invitation to Press Conference announcing the new season	√	√	√		
Invitation to meet the Chief Conductor (or musicians) or to special events	1x year				
VIP cloak-room (Orchestral Series A)	√	√	√	√	√
Free concert programs	√	√	√	√	√
Priority ticket booking	2 weeks	2 weeks	2 weeks	2 weeks	2 weeks
News update on eNews	√	√	√	√	√

* Benefits for Benefactors over 500 000 CZK are given individual consideration.

www.pkf.cz/en/pkf-friends

